



© Jeff Doel

Denver, Colorado, United States, 2008

TABLE OF CONTENTS

DIAMOND TOOLS

DOWN THE HOLE

DRILL RIGS

PUMPS

DRILLING ADDITIVES & LUBRICANTS

SURVEY SYSTEMS

ACCESSORIES

GEOTECHNICAL EQUIPMENT





Montreal, Canada  
Phone 514.336.9211  
Toll-free 1.800.768.7274  
Fax 514.745.4125  
info@fordia.com

The Fordia Catalogue is a publication intended for internal and external distribution. The entire content of this publication, including but not limited to text, design, photographs and graphics, is the property of Fordia. Reproduction in whole or in part without written permission from Fordia is prohibited. Features and technical specifications are subject to change without notice. All weights and measurements are approximate.

To order a copy of this catalogue, please contact your sales representative.

## ONE CLEAR FOCUS

Fordia's goal is simple - to develop and distribute the best diamond tools, equipment and accessories to small and large businesses specializing in core drilling for the mineral exploration and geotechnical industries.

That is our mission. How we live it is our strength. We provide exceptional service, demonstrated daily by our worldwide representatives. Our distribution network ensures Fordia products can be delivered globally, right on schedule. We are highly committed to quality and innovation.

Luc Paquet  
President

Alain Paquet  
Vice-President

Denis Landry  
Executive VP & General Manager

## OUR COMMITMENT TO TOTAL QUALITY

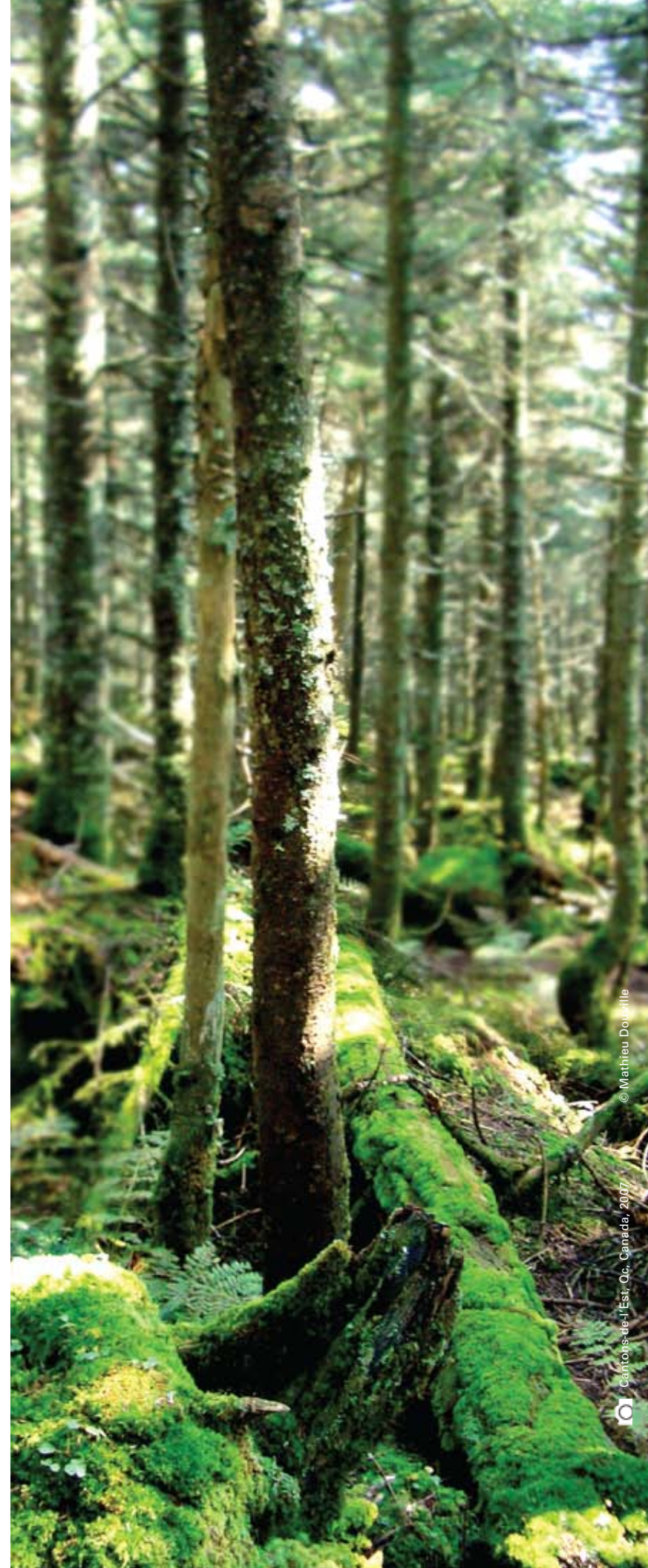
Fordia has always been at the forefront of excellence in the mining industry.

At Fordia, quality means providing products and services on time that comply with our customers' specific requirements at competitive prices. To achieve this, every employee strives to reach this level of quality the first time and at all times.

This commitment to excellence requires processes that ensure our manufacturing methods, business management, employee training and product development all foster quality and continuous improvement.

In order to uphold our dedication to total quality, Fordia continuously invests in the development of its management system and ensures all employees are involved in maintaining quality.

**At Fordia, quality is a commitment.**



© Mathieu Drouin

Canonsville, Pa., U.S.A. / Canada, 2007



“Drill crews know by ear and by heart what happens down the hole. Getting quality wireline core barrels and overshots that you can rely on is essential. Because once they are down there, you want to make sure that what happens down the hole doesn’t stay in the hole...”



DOWN THE HOLE

TABLE OF CONTENTS

|                   |       |                        |       |   |       |
|-------------------|-------|------------------------|-------|---|-------|
| BWL CORING SYSTEM | 10-15 | INNER TUBES            | 32-35 | LOCKING COUPLINGS<br>& DIAMOND ADAPTOR<br>COUPLINGS | 44-45 |
| NWL CORING SYSTEM | 16-23 | OUTER TUBES            | 36-37 |   |       |
| HWL CORING SYSTEM | 24-31 | DRILL RODS<br>& CASING | 38-41 | WATER SWIVELS                                       | 46-51 |
|                   |       | CASING CUTTERS         | 42-43 | HOISTING PLUGS                                      | 52-53 |
|                   |       |                        |       | ADAPTORS  | 54-63 |



# OWL CORING SYSTEM

OUTSTANDING CORING SYSTEM TO GET THE MOST OUT OF YOUR DRILLING

Discover OWL, Fordia's Outstanding Wire Line series with quality core barrels, head assemblies, and overshots. Every component of the OWL tools is manufactured with the highest quality workmanship and is designed to be fully interchangeable with the corresponding core barrels and parts of other manufacturers.

The OWL products are available in all standard sizes, including thin wall. For specialty size needs, Fordia also offers custom-made products upon request.



Fordia also offers other core barrel diameters, such as PWL; please contact your sales representative for more details or to place an order.

OWL CORE BARREL

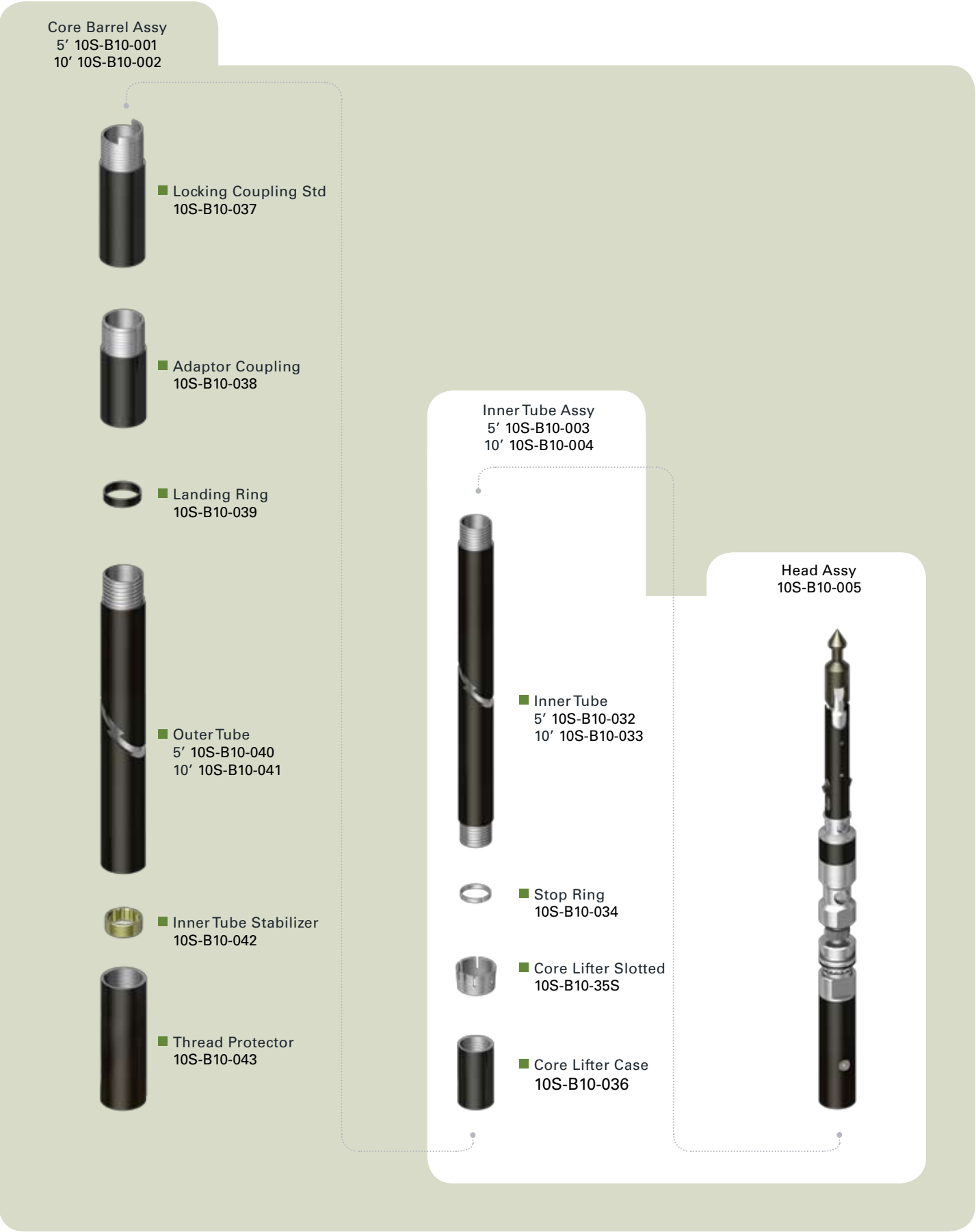


To get the core efficiently and successfully, start with Fordia’s standard BWL core barrel. Cost-efficient and reliable, this wire line device comprises a complete head assembly as well as all inner tube and outer tube components. It is also fully compatible with other corresponding wire line series. Spare parts are available at all times at Fordia.

|   | DESCRIPTION                 | PART NO.    |
|---|-----------------------------|-------------|
|   | CORE BARREL ASSY FF 5'      | 10S-B10-001 |
|   | CORE BARREL ASSY FF 10'     | 10S-B10-002 |
|   | INNERTUBE ASSY FF 5'        | 10S-B10-003 |
|   | INNERTUBE ASSY FF 10'       | 10S-B10-004 |
|   | HEAD ASSY FF                | 10S-B10-005 |
| 1 | INNERTUBE 5'                | 10S-B10-032 |
|   | INNERTUBE 10'               | 10S-B10-033 |
|   | STOP RING                   | 10S-B10-034 |
| 2 | CORE LIFTER SLOTTED         | 10S-B10-35S |
|   | CORE LIFTER CASE            | 10S-B10-036 |
| 3 | LOCKING COUPLING STD W/TANG | 10S-B10-037 |
| 4 | ADAPTOR COUPLING            | 10S-B10-038 |
|   | LANDING RING                | 10S-B10-039 |
| 5 | OUTERTUBE 5'                | 10S-B10-040 |
|   | OUTERTUBE 10'               | 10S-B10-041 |
|   | INNERTUBE STABILIZER        | 10S-B10-042 |
|   | THREAD PROTECTOR            | 10S-B10-043 |

- 1
- Optional chrome plated inner tube is also available. Please refer to pages 40-41 for more detailed information.
- 2
- Optional diamond coating as well as broached core lifters are also available. Please refer to pages 38-39 for more detailed information.
- 3
- Optional full-hole and carbide locking couplings are also available. Please refer to page 50 for more detailed information.
- 4
- Optional diamond adaptor coupling is also available. Please refer to page 51 for more detailed information.
- 5
- Optional full-hole and chrome plated outer tubes are also available. Please refer to page 42 for more detailed information.

3D EXPLODED VIEW



OWL HEAD ASSEMBLY



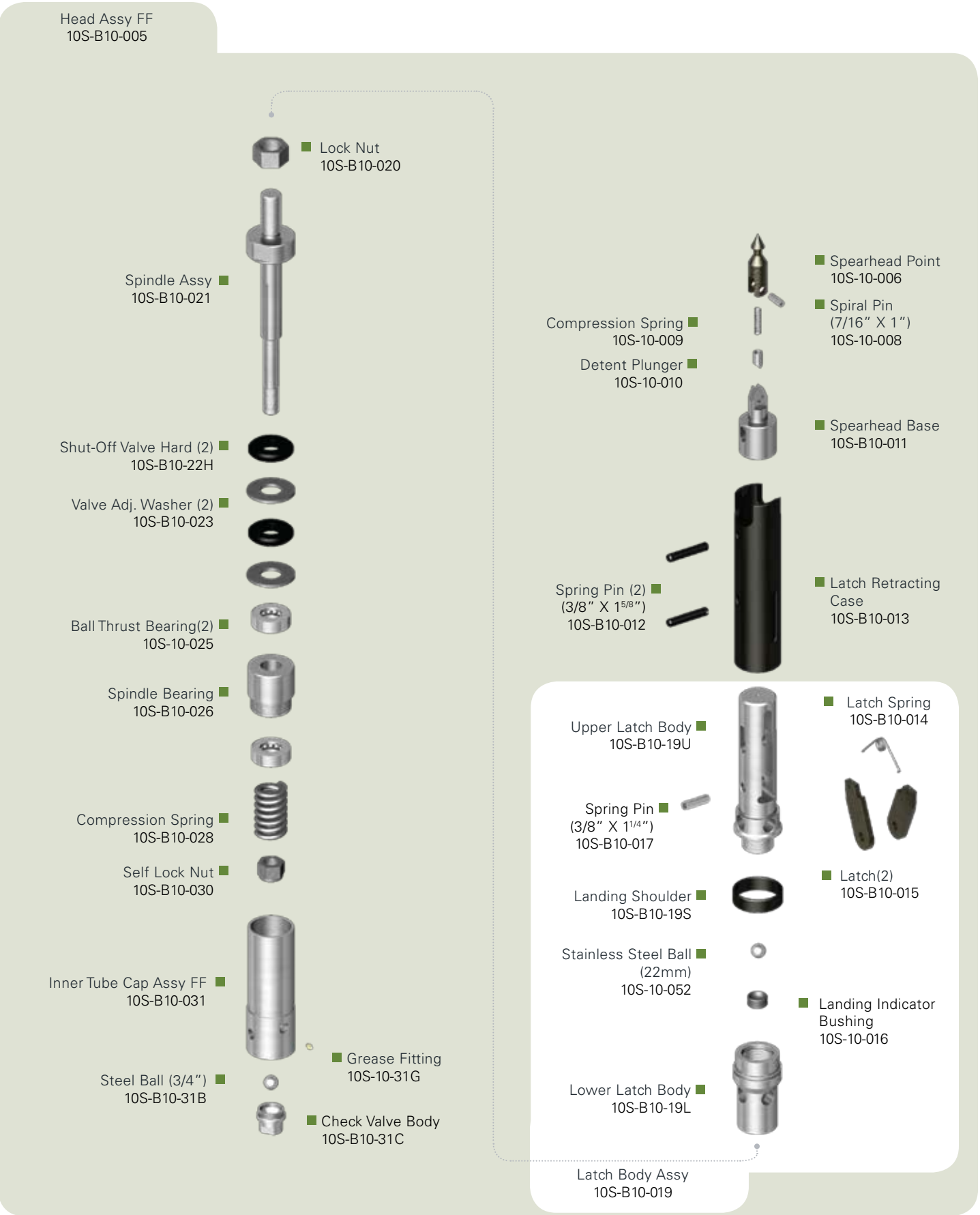
Discover Fordia’s Outstanding Wire Line (OWL) series with this BWL head assembly. Every component is manufactured with the highest quality workmanship and is designed to be fully compatible with the corresponding core barrels and parts of other manufacturers.

- Knuckle-head for easier manipulation and less stress on the wireline
- Two-piece latch body with reversible landing shoulder for greater lifespan
- Easily adjustable to optimize space between core lifter case and drill bit
- Can be used for dry-hole descent
- Fully compatible with other manufacturers’ core barrels and parts

| DESCRIPTION                | PART NO.    |
|----------------------------|-------------|
| HEAD ASSY FF               | 10S-B10-005 |
| SPEARHEAD POINT            | 10S-10-006  |
| SPIRAL PIN (7/16" x 1")    | 10S-10-008  |
| COMPRESSION SPRING         | 10S-10-009  |
| DETENT PLUNGER             | 10S-10-010  |
| SPEARHEAD BASE             | 10S-B10-011 |
| SPRING PIN (3/8" X 1-5/8") | 10S-B10-012 |
| LATCH RETRACTING CASE      | 10S-B10-013 |
| LATCH SPRING               | 10S-B10-014 |
| LATCH                      | 10S-B10-015 |
| LANDING INDICATOR BUSHING  | 10S-10-016  |
| STAINLESS STEEL BALL 22mm  | 10S-10-052  |
| SPRING PIN (3/8" X 1-1/4") | 10S-B10-017 |
| LATCH BODY ASSY            | 10S-B10-019 |
| UPPER LATCH BODY           | 10S-B10-19U |
| LANDING SHOULDER           | 10S-B10-19S |
| LOWER LATCH BODY           | 10S-B10-19L |
| LOCK NUT                   | 10S-B10-020 |
| SPINDLE ASSY               | 10S-B10-021 |
| SHUT-OFF VALVE HARD (2)    | 10S-B10-22H |
| VALVE ADJUSTING WASHER (2) | 10S-B10-023 |
| BALL THRUST BEARING(2)     | 10S-10-025  |
| SPINDLE BEARING            | 10S-B10-026 |
| COMPRESSION SPRING         | 10S-B10-028 |
| SELF LOCK NUT              | 10S-B10-030 |
| INNER TUBE CAP ASSY FF     | 10S-B10-031 |
| GREASE FITTING             | 10S-10-31G  |
| STEEL BALL (3/4")          | 10S-B10-31B |
| CHECK VALVE BODY           | 10S-B10-31C |

1 Optional shut-off valves (soft) are also available. Please use the following part number 10S-B10-22S to place an order.

3D EXPLODED VIEW





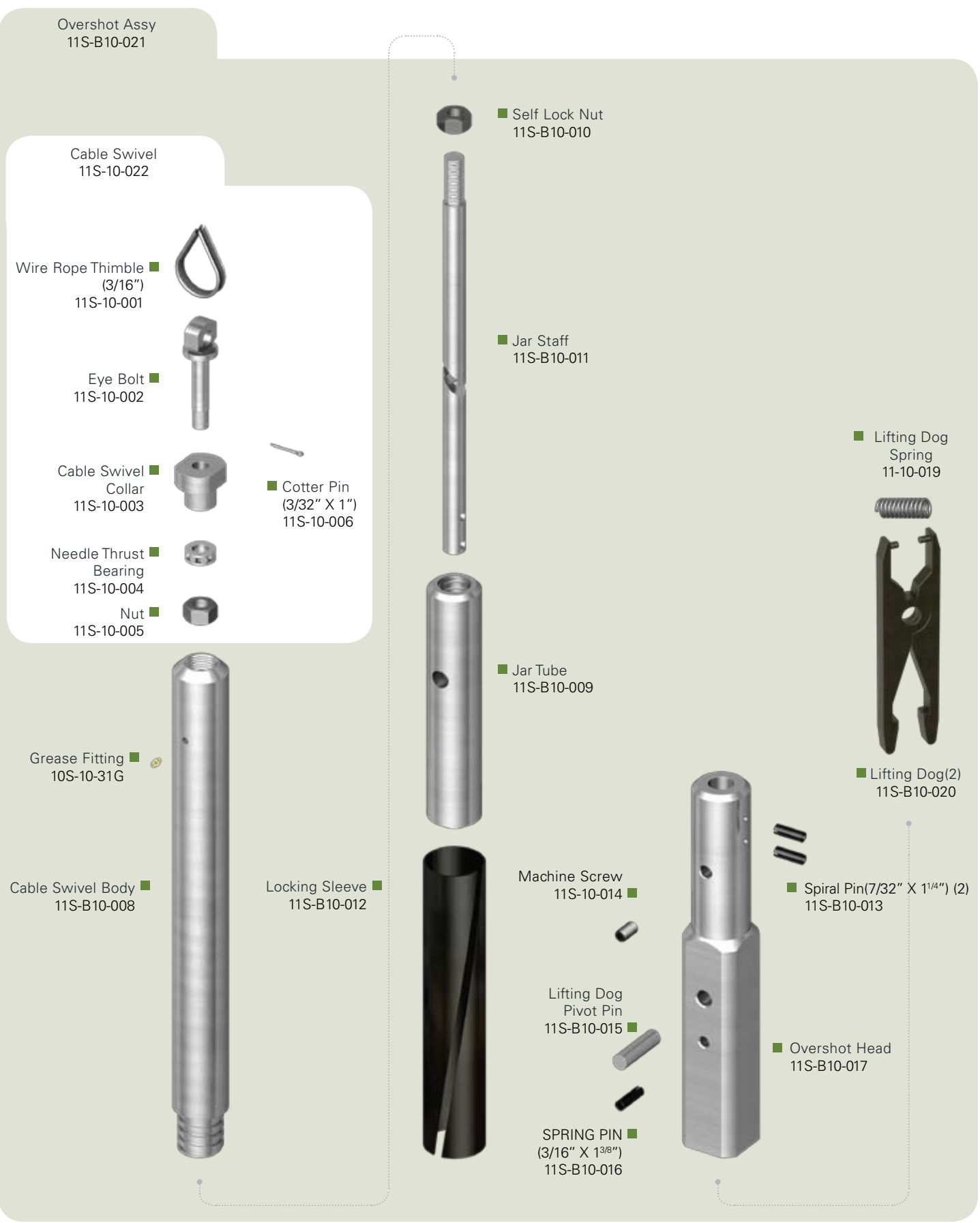
OWL OVERSHOT



To bring back the inner tube assembly to the surface, Fordia offers all standard retrieving tools, such as this BWL overshoot. For more convenience, it is fully compatible with other corresponding systems and spare parts are always available from Fordia.

| DESCRIPTION                    | PART NO.    |
|--------------------------------|-------------|
| OVERSHOT ASSY                  | 11S-B10-021 |
| CABLE SWIVEL                   | 11S-10-022  |
| WIRE ROPETHIMBLE (3/16")       | 11S-10-001  |
| EYE BOLT                       | 11S-10-002  |
| CABLE SWIVEL COLLAR            | 11S-10-003  |
| NEEDLE THRUST BEARING          | 11S-10-004  |
| NUT                            | 11S-10-005  |
| COTTER PIN (3/32" X 1")        | 11S-10-006  |
| GREASE FITTING                 | 10S-10-31G  |
| CABLE SWIVEL BODY              | 11S-B10-008 |
| JARTUBE                        | 11S-B10-009 |
| SELF LOCK NUT                  | 11S-B10-010 |
| JAR STAFF                      | 11S-B10-011 |
| LOCKING SLEEVE                 | 11S-B10-012 |
| SPIRAL PIN (7/32"x 1-1/4") (2) | 11S-B10-013 |
| MACHINE SCREW                  | 11S-10-014  |
| LIFTING DOG PIVOT PIN          | 11S-B10-015 |
| SPRING PIN (3/16" X 1-3/8")    | 11S-B10-016 |
| OVERSHOT HEAD                  | 11S-B10-017 |
| LIFTING DOG SPRING             | 11-10-019   |
| LIFTING DOG (2)                | 11S-B10-020 |

3D EXPLODED VIEW



OWL CORE BARREL

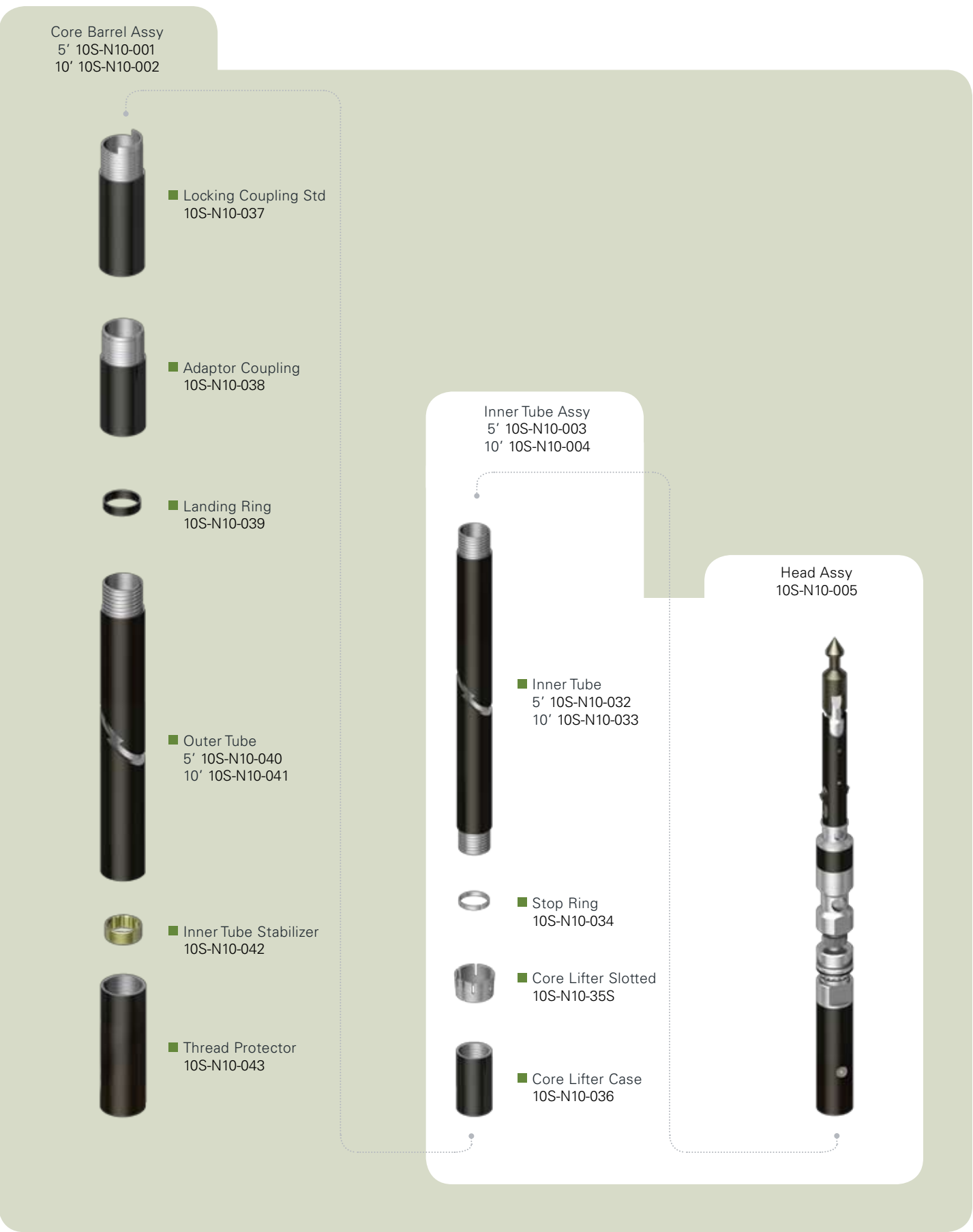


To get the core efficiently and successfully, start with Fordia’s standard NWL core barrel. Cost-efficient and reliable, this wire line device comprises a complete head assembly as well as all inner tube and outer tube components. It is also fully compatible with other corresponding wire line series. Spare parts are always available from Fordia.

|   | DESCRIPTION                 | PART NO.    |
|---|-----------------------------|-------------|
|   | CORE BARREL ASSY FF 5'      | 10S-N10-001 |
|   | CORE BARREL ASSY FF 10'     | 10S-N10-002 |
|   | INNERTUBE ASSY FF 5'        | 10S-N10-003 |
|   | INNERTUBE ASSY FF 10'       | 10S-N10-004 |
|   | HEAD ASSY FF                | 10S-N10-005 |
| 1 | INNERTUBE 5'                | 10S-N10-032 |
|   | INNERTUBE 10'               | 10S-N10-033 |
|   | STOP RING                   | 10S-N10-034 |
| 2 | CORE LIFTER SLOTTED         | 10S-N10-35S |
|   | CORE LIFTER CASE            | 10S-N10-036 |
| 3 | LOCKING COUPLING STD W/TANG | 10S-N10-037 |
|   | ADAPTOR COUPLING            | 10S-N10-038 |
|   | LANDING RING                | 10S-N10-039 |
| 5 | OUTERTUBE 5'                | 10S-N10-040 |
|   | OUTERTUBE 10'               | 10S-N10-041 |
|   | INNER TUBE STABILIZER       | 10S-N10-042 |
|   | THREAD PROTECTOR            | 10S-N10-043 |

- 1
- Optional chrome plated inner tube is also available. Please refer to pages 40-41 for more detailed information.
- 2
- Optional diamond coating as well as broached core lifters are also available. Please refer to pages 38-39 for more detailed information.
- 3
- Optional full-hole and carbide locking couplings are also available. Please refer to page 50 for more detailed information.
- 4
- Optional diamond adaptor coupling is also available. Please refer to page 51 for more detailed information.
- 5
- Optional full-hole and chrome plated outer tubes are also available. Please refer to page 42 for more detailed information.

3D EXPLODED VIEW





OWL HEAD ASSEMBLY



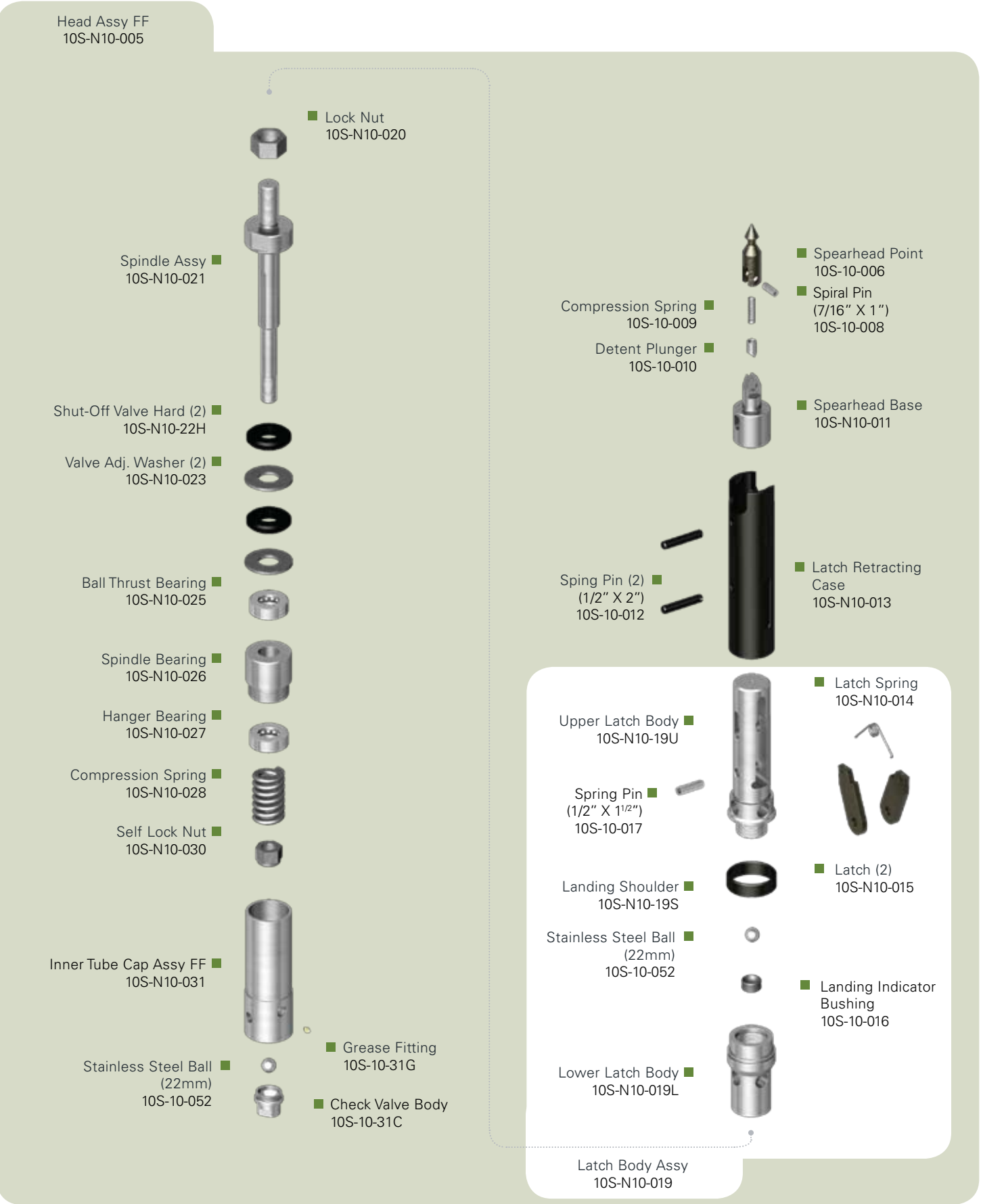
Discover Fordia’s Outstanding Wire Line (OWL) series with this NWL head assembly. Every component is manufactured with the highest quality workmanship and is designed to be fully compatible with the corresponding core barrels and parts of other manufacturers.

- Knuckle-head for easier manipulation and less stress on the wireline
- Two-piece latch body with reversible landing shoulder for greater lifespan
- Easily adjustable to optimize space between core lifter case and drill bit
- Can be used for dry-hole descent
- Fully compatible with other manufacturers’ core barrels and parts

| DESCRIPTION                | PART NO.    |
|----------------------------|-------------|
| HEAD ASSY FF               | 10S-N10-005 |
| SPEARHEAD POINT            | 10S-10-006  |
| SPIRAL PIN (7/16" x 1")    | 10S-10-008  |
| COMPRESSION SPRING         | 10S-10-009  |
| DETENT PLUNGER             | 10S-10-010  |
| SPEARHEAD BASE             | 10S-N10-011 |
| SPRING PIN (1/2" X 2")     | 10S-N10-012 |
| LATCH RETRACTING CASE      | 10S-N10-013 |
| LATCH SPRING               | 10S-N10-014 |
| LATCH (2)                  | 10S-N10-015 |
| LANDING INDICATOR BUSHING  | 10S-10-016  |
| STAINLESS STEEL BALL 22mm  | 10S-10-052  |
| SPRING PIN (1/2" X 1-1/2") | 10S-N10-017 |
| LATCH BODY ASSY            | 10S-N10-019 |
| UPPER LATCH BODY           | 10S-N10-19U |
| LANDING SHOULDER           | 10S-N10-19S |
| LOWER LATCH BODY           | 10S-N10-19L |
| LOCK NUT                   | 10S-N10-020 |
| SPINDLE ASSY               | 10S-N10-021 |
| SHUT-OFF VALVE HARD (2)    | 10S-N10-22H |
| VALVE ADJUSTING WASHER (2) | 10S-N10-023 |
| BALL THRUST BEARING        | 10S-N10-025 |
| SPINDLE BEARING            | 10S-N10-026 |
| HANGER BEARING             | 10S-N10-027 |
| COMPRESSION SPRING         | 10S-N10-028 |
| SELF LOCK NUT              | 10S-N10-030 |
| INNERTUBE CAP ASSY FF      | 10S-N10-031 |
| GREASE FITTING             | 10S-10-31G  |
| STAINLESS STEEL BALL 22mm  | 10S-10-052  |
| CHECK VALVE BODY           | 10S-10-31C  |

1 Optional shut-off valves (soft) are also available. Please use the following part number 10S-N10-22S to place an order.

3D EXPLODED VIEW



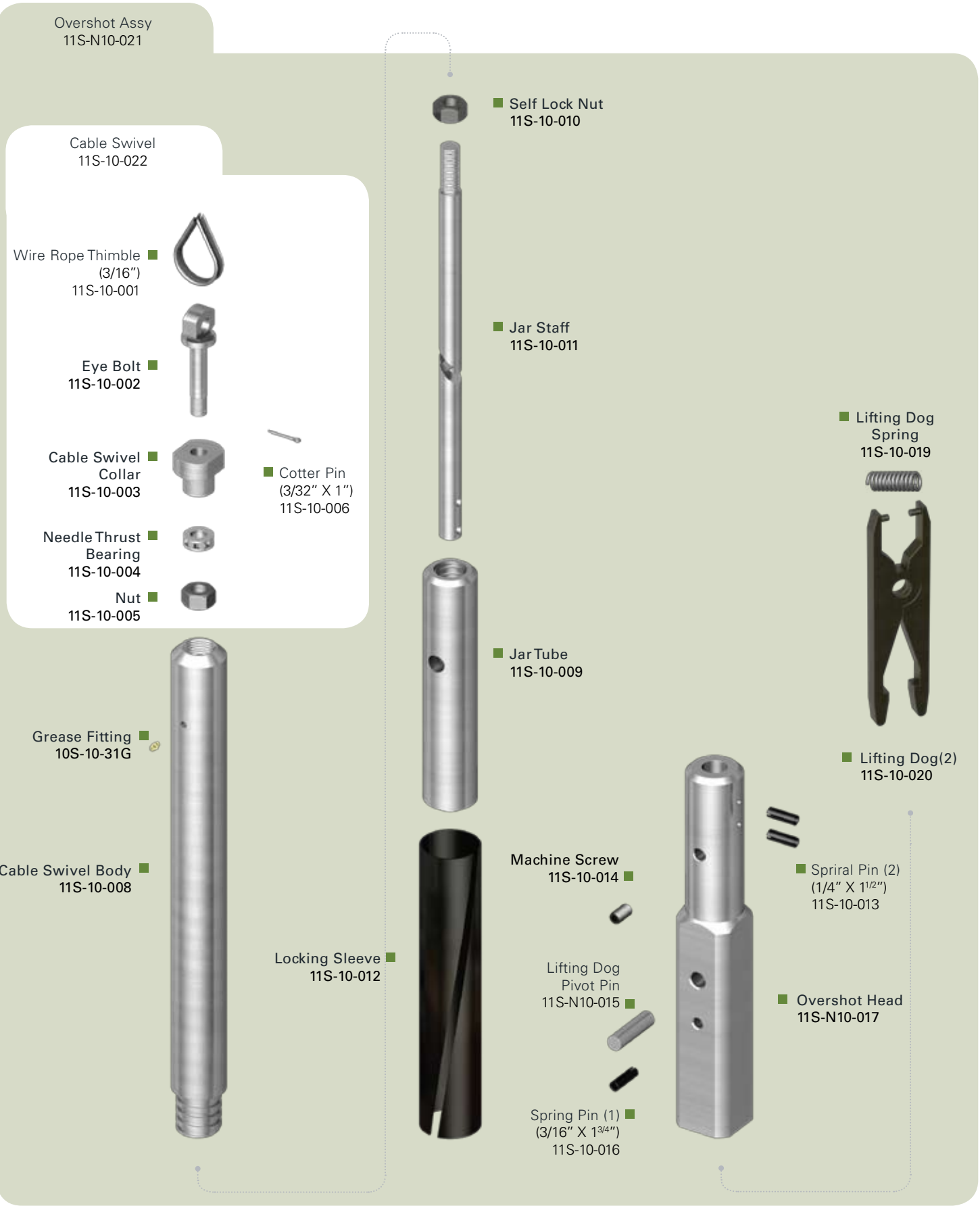
OWL OVERSHOT



To bring back the inner tube assembly to the surface, Fordia offers all standard retrieving tools, such as this NWL overshoot. For more convenience, it is fully compatible with other corresponding systems and spare parts are always available from Fordia.

| DESCRIPTION                   | PART NO.    |
|-------------------------------|-------------|
| OVERSHOT ASSY                 | 11S-N10-021 |
| CABLE SWIVEL                  | 11S-10-022  |
| WIRE ROPETHIMBLE (3/16")      | 11S-10-001  |
| EYE BOLT                      | 11S-10-002  |
| CABLE SWIVEL COLLAR           | 11S-10-003  |
| NEEDLETHRUST BEARING          | 11S-10-004  |
| NUT                           | 11S-10-005  |
| COTTER PIN (3/32" X 1")       | 11S-10-006  |
| GREASE FITTING                | 10S-10-31G  |
| CABLE SWIVEL BODY             | 11S-10-008  |
| JARTUBE                       | 11S-10-009  |
| SELF LOCK NUT                 | 11S-10-010  |
| JAR STAFF                     | 11S-10-011  |
| LOCKING SLEEVE                | 11S-10-012  |
| SPIRAL PIN (1/4"x 1-1/2") (2) | 11S-10-013  |
| MACHINE SCREW                 | 11S-10-014  |
| LIFTING DOG PIVOT PIN         | 11S-N10-015 |
| SPRING PIN (3/16" X 1-3/4")   | 11S-10-016  |
| OVERSHOT HEAD                 | 11S-N10-017 |
| LIFTING DOG SPRING            | 11S-10-019  |
| LIFTING DOG (2)               | 11S-10-020  |

3D EXPLODED VIEW





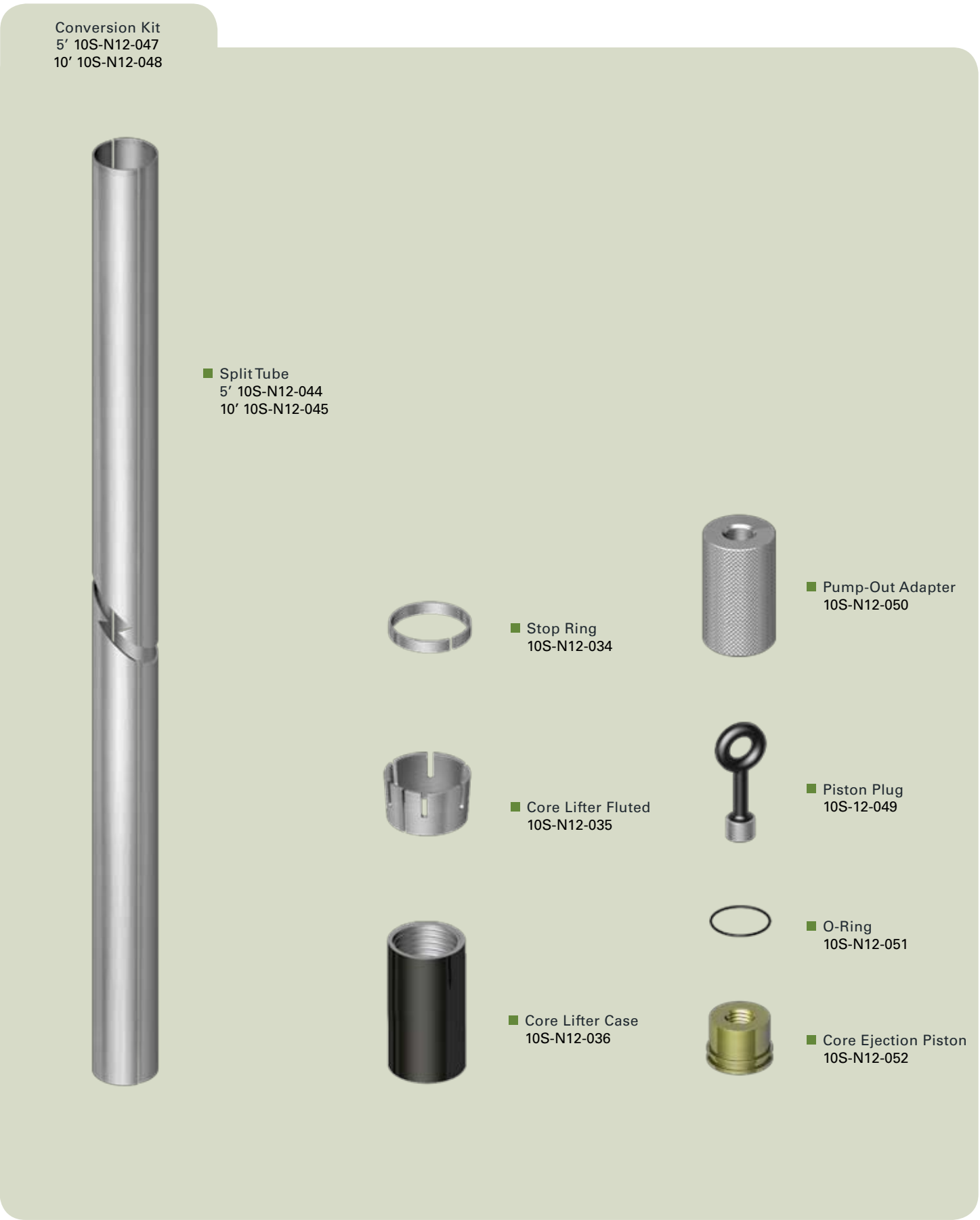
OWL CONVERSION KITS

NWL TO NWL3 CORE BARREL

To maximise the use of current core barrels and reduce drilling cost, Fordia has in stock practical NWL to NWL3 core barrel conversion kits. They ensure a simple switch from one use to another and help get the most out of expensive drilling equipment.

| DESCRIPTION                        | PART NO.    |
|------------------------------------|-------------|
| CONVERSION KIT NWL TO NWL3 1.5m/5' | 10S-N12-047 |
| CONVERSION KIT NWL TO NWL3 3m/10'  | 10S-N12-048 |
| SPLIT TUBE 1.5m/5'                 | 10S-N12-044 |
| SPLIT TUBE 3m/10'                  | 10S-N12-045 |
| STOP RING                          | 10S-N12-034 |
| CORE LIFTER FLUTED                 | 10S-N12-035 |
| CORE LIFTER CASE                   | 10S-N12-036 |
| CORE EJECTION PISTON               | 10S-N12-052 |
| O-RING                             | 10S-N12-051 |
| PISTON PLUG                        | 10S-12-049  |
| PUMP-OUT ADAPTER                   | 10S-N12-050 |

3D EXPLODED VIEW



OWL CORE BARREL

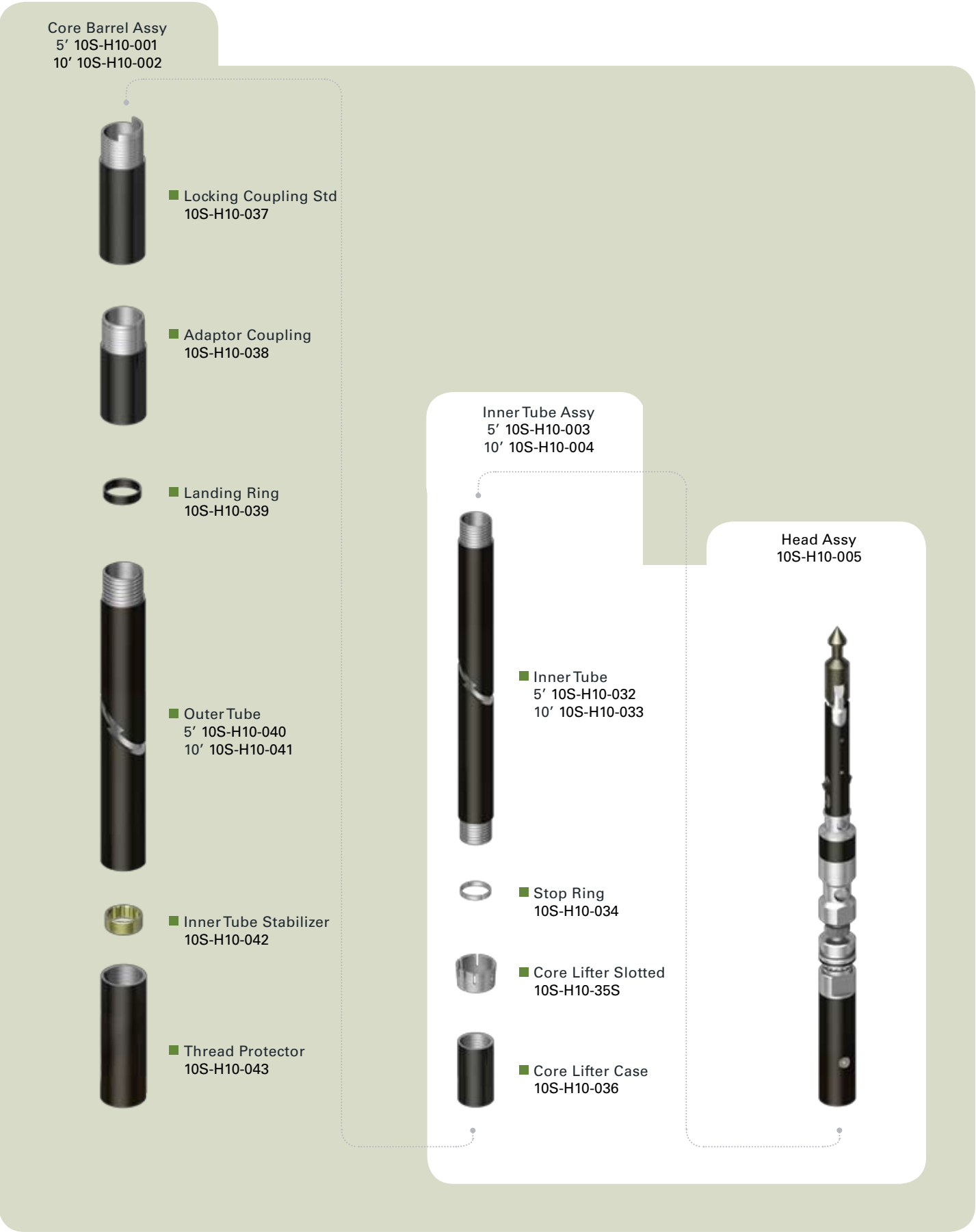


To get the core efficiently and successfully, start with Fordia’s standard HWL core barrel. Cost-efficient and reliable, this wire line device comprises a complete head assembly as well as all inner tube and outer tube components. It is also fully compatible with other corresponding wire line series. Spare parts are always available from Fordia.

|   | DESCRIPTION                 | PART NO.    |
|---|-----------------------------|-------------|
|   | CORE BARREL ASSY FF 5'      | 10S-H10-001 |
|   | CORE BARREL ASSY FF 10'     | 10S-H10-002 |
|   | INNERTUBE ASSY FF 5'        | 10S-H10-003 |
|   | INNERTUBE ASSY FF 10'       | 10S-H10-004 |
|   | HEAD ASSY FF                | 10S-H10-005 |
| 1 | INNERTUBE 5'                | 10S-H10-032 |
|   | INNERTUBE 10'               | 10S-H10-033 |
|   | STOP RING                   | 10S-H10-034 |
| 2 | CORE LIFTER SLOTTED         | 10S-H10-35S |
|   | CORE LIFTER CASE            | 10S-H10-036 |
|   | LOCKING COUPLING STD W/TANG | 10S-H10-037 |
| 3 | ADAPTOR COUPLING            | 10S-H10-038 |
|   | LANDING RING                | 10S-H10-039 |
|   | OUTERTUBE 5'                | 10S-H10-040 |
| 4 | OUTERTUBE 10'               | 10S-H10-041 |
|   | INNERTUBE STABILIZER        | 10S-H10-042 |
|   | THREAD PROTECTOR            | 10S-H10-043 |

- 1
- Optional chrome plated inner tube is also available. Please refer to pages 40-41 for more detailed information.
- 2
- Optional diamond coating as well as broached core lifters are also available. Please refer to pages 38-39 for more detailed information.
- 3
- Optional full-hole and carbide locking couplings are also available. Please refer to page 50 for more detailed information.
- 4
- Optional diamond adaptor coupling is also available. Please refer to page 51 for more detailed information.
- 5
- Optional full-hole and chrome plated outer tubes are also available. Please refer to page 42 for more detailed information.

3D EXPLODED VIEW





**O** HWL

- Knuckle-head for easier manipulation and less stress on the wireline
- Two-piece latch body with reversible landing shoulder for greater lifespan
- Easily adjustable to optimize space between core lifter case and drill bit
- Can be used for dry-hole descent
- Fully compatible with other manufacturers' core barrels and parts

1

1

Head Assy FF  
10S-H10-005

Lock Nut  
10S-H10-020

Spindle Assy  
10S-H10-021

Shut-Off Valve Hard (2)  
10S-H10-22H

Valve Adj. Washer (2)  
10S-H10-023

Ball Thrust Bearing(2)  
10S-H10-025

Spindle Bearing  
10S-H10-026

Ball Thrust Bearing  
10S-N10-025

Compression Spring  
10S-H10-028

Self Lock Nut  
10S-H10-030

Inner Tube Cap Assy  
10S-H10-031

Grease Fitting  
10S-10-31G

Stainless Steel Ball  
(22mm)  
10S-10-052

Check Valve Body  
10S-10-31C

Compression Spring  
10S-10-009

Detent Plunger  
10S-10-010

Spearhead Point  
10S-10-006

Spiral Pin  
(7/16" X 1")  
10S-10-008

Spearhead Base  
10S-H10-011

Spring Pin (2)  
(1/2" X 2 3/4")  
10S-H10-012

Latch Retracting  
Case  
10S-H10-013

Upper Latch Body  
10S-H10-19U

Spring Pin  
(1/2" X 2")  
10S-10-012

Landing Shoulder  
10S-H10-19S

Stainless Steel Ball  
(22mm)  
10S-10-052

Lower Latch Body  
10S-H10-019L

Latch Spring  
10S-H10-014

Latch(2)  
10S-H10-015

Landing Indicator  
Bushing  
10S-10-016

Latch Body Assy  
10S-H10-019

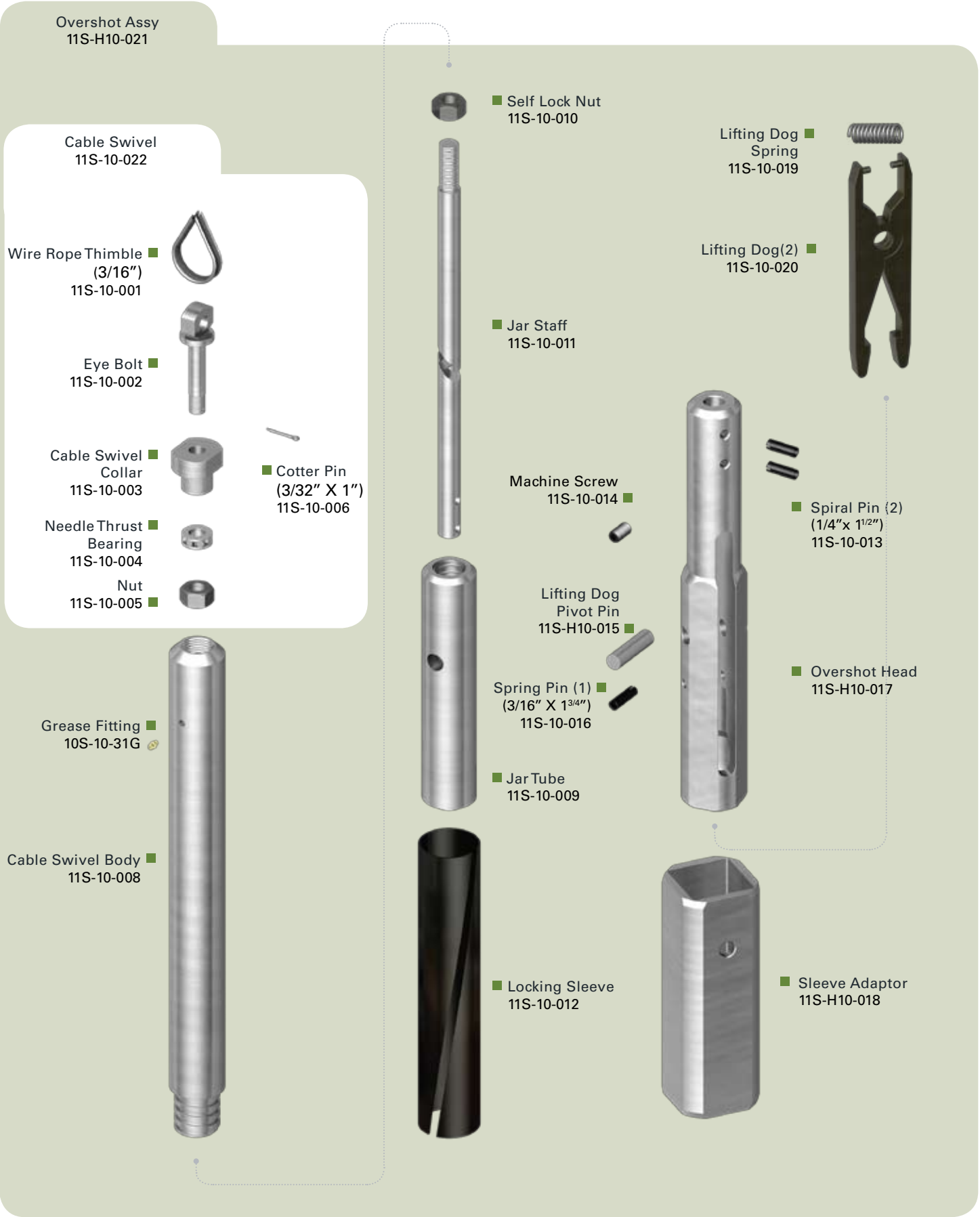
OWL OVERSHOT



To bring back the inner tube assembly to the surface, Fordia offers all standard retrieving tools, such as this HWL overshoot, that completes its wireline series. For more convenience, it is fully compatible with other corresponding systems and spare parts are available at all times at Fordia.

| DESCRIPTION                   | PART NO.    |
|-------------------------------|-------------|
| OVERSHOT ASSY                 | 11S-H10-021 |
| CABLE SWIVEL                  | 11S-10-022  |
| WIRE ROPETHIMBLE (3/16")      | 11S-10-001  |
| EYE BOLT                      | 11S-10-002  |
| CABLE SWIVEL COLLAR           | 11S-10-003  |
| NEEDLETHRUST BEARING          | 11S-10-004  |
| NUT                           | 11S-10-005  |
| COTTER PIN (3/32" X 1")       | 11S-10-006  |
| GREASE FITTING                | 10S-10-31G  |
| CABLE SWIVEL BODY             | 11S-10-008  |
| JARTUBE                       | 11S-10-009  |
| SELF LOCK NUT                 | 11S-10-010  |
| JAR STAFF                     | 11S-10-011  |
| LOCKING SLEEVE                | 11S-10-012  |
| SPIRAL PIN (1/4"x 1-1/2") (2) | 11S-10-013  |
| MACHINE SCREW                 | 11S-10-014  |
| LIFTING DOG PIVOT PIN         | 11S-H10-015 |
| SPRING PIN (3/16" X 1-3/4")   | 11S-10-016  |
| OVERSHOT HEAD                 | 11S-H10-017 |
| SLEEVE ADAPTOR                | 11S-H10-018 |
| LIFTING DOG SPRING            | 11S-10-019  |
| LIFTING DOG (2)               | 11S-10-020  |

3D EXPLODED VIEW





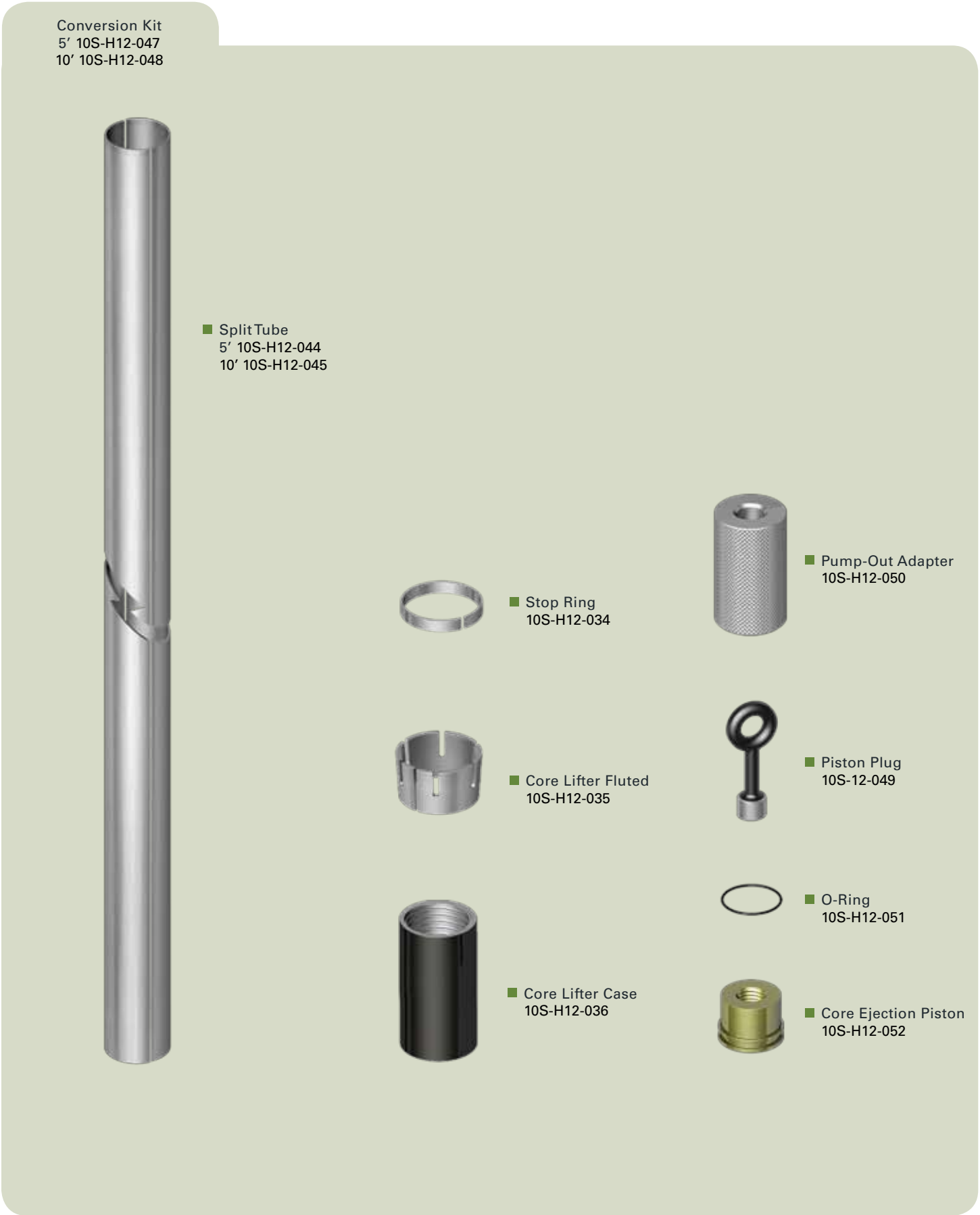
OWL CONVERSION KITS

○ HWL TO HWL3 CORE BARREL

To maximise the use of current core barrels and reduce drilling cost, Fordia has in stock practical HWL to HWL3 core barrel conversion kits. They ensure a switch from one use to another and help get the most out of expensive drilling equipment.

| DESCRIPTION                        | PART NO.    |
|------------------------------------|-------------|
| CONVERSION KIT HWL TO HWL3 1.5m/5' | 10S-H12-047 |
| CONVERSION KIT HWL TO HWL3 3m/10'  | 10S-H12-048 |
| SPLIT TUBE 1.5m/5'                 | 10S-H12-044 |
| SPLIT TUBE 3m/10'                  | 10S-H12-045 |
| STOP RING                          | 10S-H12-034 |
| CORE LIFTER FLUTED                 | 10S-H12-035 |
| CORE LIFTER CASE                   | 10S-H12-036 |
| CORE EJECTION PISTON               | 10S-H12-052 |
| O-RING                             | 10S-H12-051 |
| PISTON PLUG                        | 10S-12-049  |
| PUMP-OUT ADAPTER                   | 10S-H12-050 |

3D EXPLODED VIEW



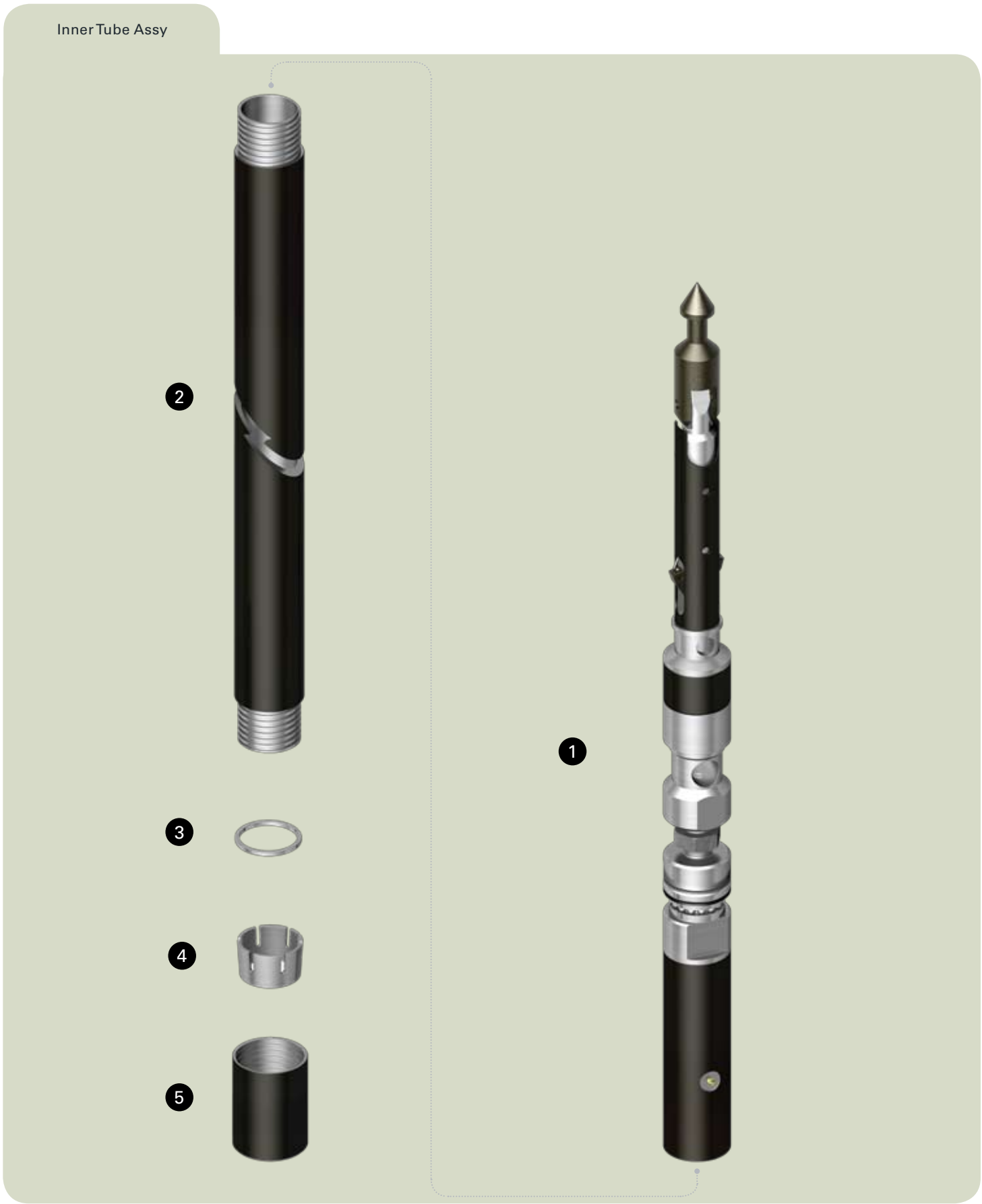
INNER TUBE ASSEMBLY

Inner tube components are part of the standard core barrel, but can also be ordered as a specific group or as individual spare parts. For more convenience, Fordia has in stock all standard sizes of inner tube components – each of them is quality crafted and fully interchangeable with other manufacturers’ parts.

| SIZE | REFERENCE NO. | DESCRIPTION         | PART NO.    |
|------|---------------|---------------------|-------------|
| BWL  |               |                     |             |
|      |               | INNERTUBE ASSY 5"   | 10S-B10-003 |
|      |               | INNERTUBE ASSY 10"  | 10S-B10-004 |
|      | 1             | HEAD ASSY FF        | 10S-B10-005 |
|      | 2             | INNERTUBE 5'        | 10S-B10-032 |
|      | 2             | INNERTUBE 10'       | 10S-B10-033 |
|      | 3             | STOP RING           | 10S-B10-034 |
|      | 4             | CORE LIFTER SLOTTED | 10S-B10-35S |
|      | 5             | CORE LIFTER CASE    | 10S-B10-036 |
| NWL  |               |                     |             |
|      |               | INNERTUBE ASSY 5"   | 10S-N10-003 |
|      |               | INNERTUBE ASSY 10"  | 10S-N10-004 |
|      | 1             | HEAD ASSY FF        | 10S-N10-005 |
|      | 2             | INNERTUBE 5'        | 10S-N10-032 |
|      | 2             | INNERTUBE 10'       | 10S-N10-033 |
|      | 3             | STOP RING           | 10S-N10-034 |
|      | 4             | CORE LIFTER SLOTTED | 10S-N10-35S |
|      | 5             | CORE LIFTER CASE    | 10S-N10-036 |
| HWL  |               |                     |             |
|      |               | INNERTUBE ASSY 5"   | 10S-H10-003 |
|      |               | INNERTUBE ASSY 10"  | 10S-H10-004 |
|      | 1             | HEAD ASSY FF        | 10S-H10-005 |
|      | 2             | INNERTUBE 5'        | 10S-H10-032 |
|      | 2             | INNERTUBE 10'       | 10S-H10-033 |
|      | 3             | STOP RING           | 10S-H10-034 |
|      | 4             | CORE LIFTER SLOTTED | 10S-H10-35S |
|      | 5             | CORE LIFTER CASE    | 10S-H10-036 |

See the Head Assembly section for a detailed configuration.

3D EXPLODED VIEW





INNER TUBES

Available in standard 5’ and 10’ lengths, Fordia has in stock all sizes of regular inner tubes, for a cost-efficient solution, and chrome plated inner tubes, for a greater corrosion resistance and overall lifespan.



INNER TUBE EXTENSIONS

Fordia offers standard sizes of inner tube extensions for use with 10” reaming shells to provide greater stabilization of the drill string. Upon request, inner tube extensions for use with 18” reaming shells are also available.



INNER TUBE COUPLINGS



INNER TUBES

|      | 5' REGULAR  | 10' REGULAR |
|------|-------------|-------------|
| SIZE | PART NO.    | PART NO.    |
| BWL  | 10S-B10-032 | 10S-B10-033 |
| NWL  | 10S-N10-032 | 10S-N10-033 |
| HWL  | 10S-H10-032 | 10S-H10-033 |

|      | 5' CHROME PLATED | 10' CHROME PLATED |
|------|------------------|-------------------|
| SIZE | PART NO.         | PART NO.          |
| BWL  | 10S-B10-32CP     | 10S-B10-33CP      |
| NWL  | 10S-N10-32CP     | 10S-N10-33CP      |
| HWL  | 10S-H10-32CP     | 10S-H10-33CP      |

INNER TUBE EXTENSIONS

| SIZE | PART NO.    |
|------|-------------|
| BWL  | 10S-B10-33X |
| NWL  | 10S-N10-33X |
| HWL  | 10S-H10-33X |

INNER TUBE COUPLINGS

| SIZE | PART NO.    |
|------|-------------|
| BWL  | 10S-B10-053 |
| NWL  | 10S-N10-053 |
| HWL  | 10S-H10-053 |

OUTERTUBES

Available in standard 5’ and 10’ lengths, Fordia has in stock all sizes of regular outer tubes for a cost-efficient drilling solution. For more options, Fordia also offers outer tubes with chrome plated ends for a greater corrosion resistance, heat-treated thin wall outer tubes for overall greater lifespan, as well as full-hole outer tubes for superior stabilization.



Regular Outer Tubes



Chrome Plated Outer Tubes



Full Hole Outer Tubes

OUTERTUBES

|      | 5'          | 10'         |
|------|-------------|-------------|
| SIZE | PART NO.    | PART NO.    |
| BWL  | 10S-B10-040 | 10S-B10-041 |
| NWL  | 10S-N10-040 | 10S-N10-041 |
| HWL  | 10S-H10-040 | 10S-H10-041 |

CHROME PLATED OUTERTUBES

|      | 5'           | 10'          |
|------|--------------|--------------|
| SIZE | PART NO.     | PART NO.     |
| BWL  | 10S-B10-40CP | 10S-B10-41CP |
| NWL  | 10S-N10-40CP | 10S-N10-41CP |
| HWL  | 10S-H10-40CP | 10S-H10-41CP |

FULL HOLE OUTERTUBES

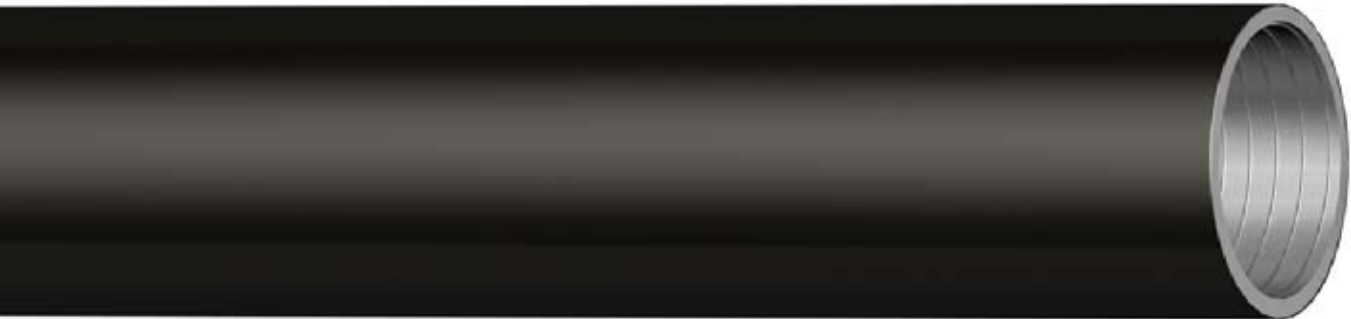
|      | 5'           | 10'          |
|------|--------------|--------------|
| SIZE | PART NO.     | PART NO.     |
| BWL  | 10S-B10-40FH | 10S-B10-41FH |
| NWL  | 10S-N10-40FH | 10S-N10-41FH |
| HWL  | 10S-H10-40FH | 10S-H10-41FH |



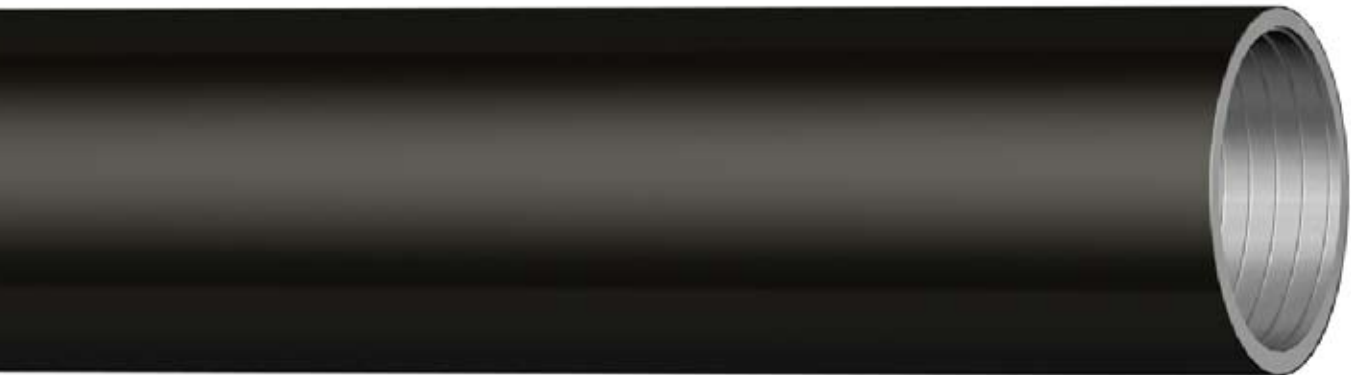
# HUSKY DRILL RODS & CASING

TRIED AND TESTED BY DRILL CREWS FOR TROUBLE-FREE DRILLING

Fordia's Husky drill rods and casing are quality-crafted with superior materials and are heat-treated for greater wear resistance. Proven in different drilling field tests across Canada, these rods and casing have also complied with rigorous governmental torsion and traction tests, delivering great results and reaching all Fordia quality norms. In short, Husky drill rods and casing are everything that is expected from Fordia's products.



Husky Drill Rod



Husky Casing

Fordia also offers other rods and casing diameters; please contact your sales representative for more details.

## HUSKY RODS (IMPERIAL SIZES)

| SIZE | LENGTH | PART NO.   |
|------|--------|------------|
| BWL  | 2'     | 12-B10-002 |
|      | 5'     | 12-B10-005 |
|      | 10'    | 12-B10-006 |
| NWL  | 2'     | 12-N10-002 |
|      | 5'     | 12-N10-005 |
|      | 10'    | 12-N10-006 |
| HWL  | 2'     | 12-H10-002 |
|      | 5'     | 12-H10-005 |
|      | 10'    | 12-H10-006 |
| BTW  | 2'     | 12-B13-002 |
|      | 5'     | 12-B13-005 |
|      | 10'    | 12-B13-006 |
| NTW  | 2'     | 12-N13-002 |
|      | 5'     | 12-N13-005 |
|      | 10'    | 12-N13-006 |
| BT   | 2'     | 12-B18-002 |
|      | 5'     | 12-B18-005 |
|      | 10'    | 12-B18-006 |
| NT   | 2'     | 12-N18-002 |
|      | 5'     | 12-N18-005 |
|      | 10'    | 12-N18-006 |

## HUSKY RODS (METRIC SIZES)

| SIZE | LENGTH | PART NO.   |
|------|--------|------------|
| BWL  | 1.5m   | 12-B10-012 |
|      | 3m     | 12-B10-013 |
| NWL  | 1.5m   | 12-N10-012 |
|      | 3m     | 12-N10-013 |
| HWL  | 1.5m   | 12-H10-012 |
|      | 3m     | 12-H10-013 |
| BTW  | 1.5m   | 12-B13-012 |
|      | 3m     | 12-B13-013 |
| NTW  | 1.5m   | 12-N13-012 |
|      | 3m     | 12-N13-013 |
| BT   | 1.5m   | 13-B18-012 |
|      | 3m     | 13-B18-013 |
| NT   | 1.5m   | 13-N18-012 |
|      | 3m     | 13-N18-013 |

## HUSKY CASING (IMPERIAL SIZES)

| SIZE | LENGTH | PART NO.   |
|------|--------|------------|
| BW   | 2'     | 13-B15-002 |
|      | 5'     | 13-B15-005 |
|      | 10'    | 13-B15-006 |
| NW   | 2'     | 13-N15-002 |
|      | 5'     | 13-N15-005 |
|      | 10'    | 13-N15-006 |
| HW   | 2'     | 13-H15-002 |
|      | 5'     | 13-H15-005 |
|      | 10'    | 13-H15-006 |
| HWT  | 2'     | 13-H22-002 |
|      | 5'     | 13-H22-005 |
|      | 10'    | 13-H22-006 |
| PW   | 2'     | 13-P15-002 |
|      | 5'     | 13-P15-005 |
|      | 10'    | 13-P15-006 |

## HUSKY CASING (METRIC SIZES)

| SIZE | LENGTH | PART NO.   |
|------|--------|------------|
| BW   | 1.5m   | 13-B15-012 |
|      | 3m     | 13-B15-013 |
| NW   | 1.5m   | 13-N15-012 |
|      | 3m     | 13-N15-013 |
| HW   | 1.5m   | 13-H15-012 |
|      | 3m     | 13-H15-013 |
| HWT  | 1.5m   | 13-H22-012 |
|      | 3m     | 13-H22-013 |
| PW   | 1.5m   | 13-P15-012 |
|      | 3m     | 13-P15-013 |



© St-Paulin, Qc, Canada, 2008

DRILL RODS

| SIZE | OUTSIDE DIAMETER |       | INSIDE DIAMETER |       | WEIGHT      |         | THREADS    | US GALLON  | LITERS  |
|------|------------------|-------|-----------------|-------|-------------|---------|------------|------------|---------|
|      | (inch)           | (mm)  | (inch)          | (mm)  | (lb/10feet) | (kg/3m) | (per inch) | (100 feet) | (100 m) |
| AWL  | 1.750            | 44.5  | 1.375           | 34.9  | 31          | 14      | 4.0        | 7.70       | 95.8    |
| BWL  | 2.188            | 55.6  | 1.813           | 46.0  | 40          | 18      | 3.0        | 13.40      | 166.3   |
| NWL  | 2.750            | 69.9  | 2.375           | 60.3  | 52          | 23      | 3.0        | 23.00      | 285.8   |
| HWL  | 3.500            | 88.9  | 3.063           | 77.8  | 77          | 34      | 3.0        | 38.20      | 474.4   |
| PWL  | 4.625            | 117.5 | 4.063           | 103.2 | 106*        | 47      | 3.0        | 67.40      | 836.6   |
| ATW  | 1.750            | 44.5  | 1.437           | 36.5  | 26          | 12      | 4.6        | 8.40       | 104.5   |
| BTW  | 2.225            | 56.5  | 1.909           | 48.5  | 35          | 16      | 4.6        | 14.80      | 184.5   |
| NTW  | 2.870            | 73.3  | 2.525           | 64.2  | 50          | 28      | 4.0        | 26.00      | 323.0   |
| BT   | 2.188            | 55.6  | 1.813           | 46.0  | 40          | 18      | 2.5        | 13.40      | 166.3   |
| NT   | 2.750            | 69.9  | 2.375           | 60.3  | 52          | 23      | 2.0        | 23.00      | 285.8   |

\*WITH COUPLING

CASING

| SIZE | OUTSIDE DIAMETER |       | INSIDE DIAMETER |       | WEIGHT      |         | THREADS    | US GALLON  | LITERS  |
|------|------------------|-------|-----------------|-------|-------------|---------|------------|------------|---------|
|      | (inch)           | (mm)  | (inch)          | (mm)  | (lb/10feet) | (kg/3m) | (per inch) | (100 feet) | (100 m) |
| AW   | 2.750            | 57.1  | 1.805           | 48.4  | 38          | 17      | 4.0        | 14.80      | 184.1   |
| BW   | 2.875            | 73.0  | 2.375           | 60.3  | 70          | 32      | 4.0        | 23.00      | 285.8   |
| NW   | 3.500            | 88.9  | 3.000           | 76.2  | 86          | 38      | 4.0        | 36.70      | 455.7   |
| HW   | 4.500            | 114.3 | 4.000           | 101.6 | 113         | 51      | 4.0        | 65.20      | 810.4   |
| HWT* | 4.500            | 114.3 | 4.000           | 101.6 | 113         | 51      | 2.5        | 65.30      | 810.8   |
| PW   | 5.500            | 139.7 | 5.000           | 127.0 | 140         | 64.3    | 3.0        | 102.00     | 1266.6  |

\*CAN BE USED AS A SUBSTITUTE FOR PQ DRILL RODS WHEN MADE FROM GRADE 4130 MATERIAL.  
CONTACT YOUR FORDIA REPRESENTATIVE FOR MORE INFORMATION.

All dimensions, weight and volumes shown are nominal.



CASING CUTTERS

Fordia’s casing cutters are just what is needed to get jammed casing or rods out of the drilling hole and recuperate as much of the drill string as possible. They are available in all standard sizes for more convenience.

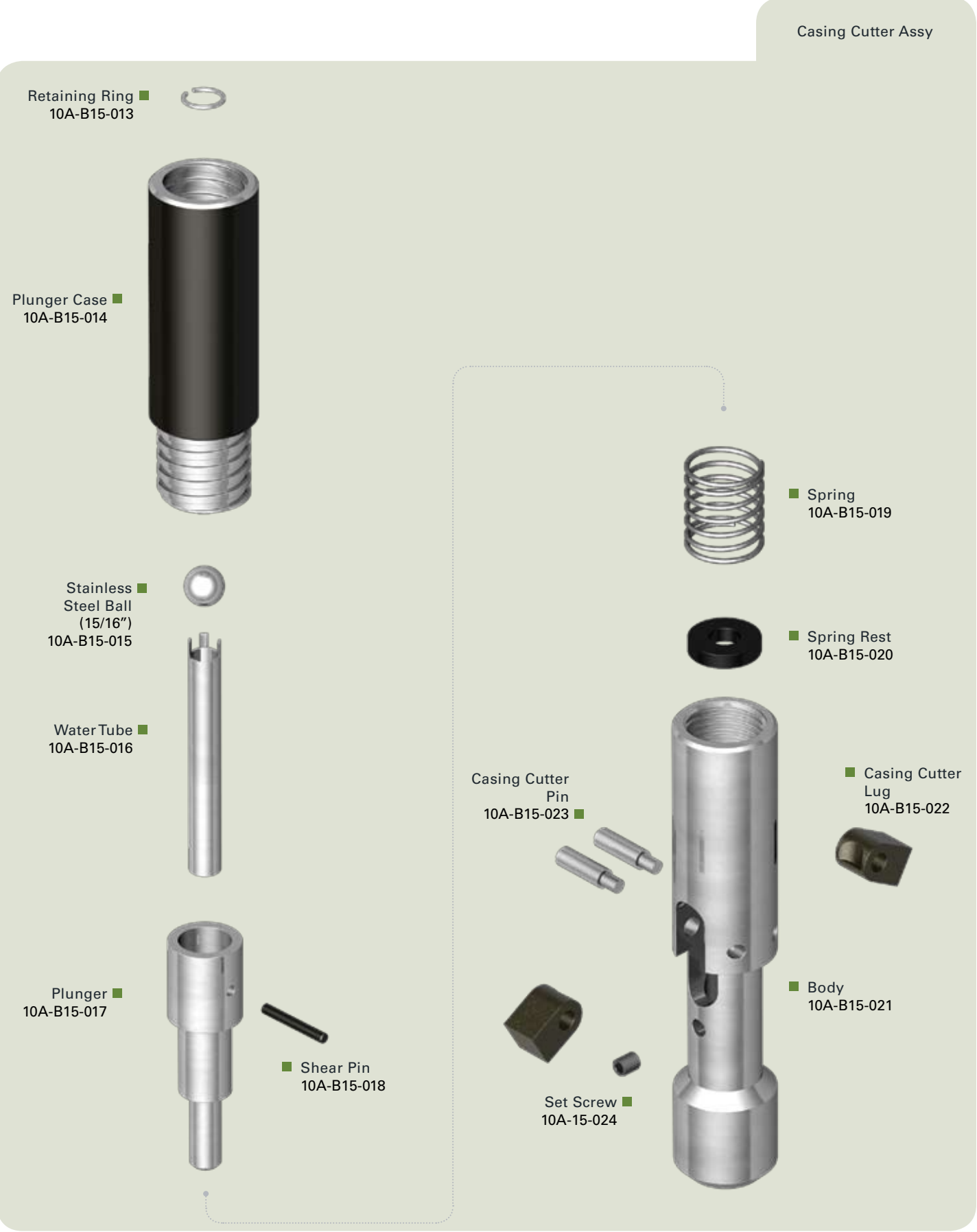
| DESCRIPTION                   | PART NO.    |
|-------------------------------|-------------|
| AW CASING / BWL ROD CUTTER    | 10A-B15-012 |
| RETAINING RING                | 10A-B15-013 |
| PLUNGER CASE                  | 10A-B15-014 |
| STAINLESS STEEL BALL (15/16") | 10U-N15-31B |
| WATERTUBE                     | 10A-B15-016 |
| PLUNGER                       | 10A-B15-017 |
| SHEAR PIN                     | 10A-B15-018 |
| SPRING                        | 10A-B15-019 |
| SPRING REST                   | 10A-B15-020 |
| BODY                          | 10A-B15-021 |
| CASING CUTTER LUG             | 10A-B15-022 |
| CASING CUTTER PIN             | 10A-B15-023 |
| SET SCREW                     | 10A-15-024  |

| DESCRIPTION                   | PART NO.    |
|-------------------------------|-------------|
| NW CASING / HWL ROD CUTTER    | 10A-H15-012 |
| RETAINING RING                | 10A-15-013  |
| STAINLESS STEEL BALL (1-1/8") | 10S-P10-31B |
| PLUNGER                       | 10A-15-017  |
| PIN (3/16" X 1-11/16")        | 10A-15-018  |
| SPRING                        | 10A-15-019  |
| BODY                          | 10A-H15-021 |
| CASING CUTTER LUG             | 10A-H15-022 |
| SPRING PIN (7/16" X 3")       | 10A-15-023  |

| DESCRIPTION                   | PART NO.    |
|-------------------------------|-------------|
| BW CASING / NWL ROD CUTTER    | 10A-N15-012 |
| RETAINING RING                | 10A-15-013  |
| PLUNGER CASE                  | 10A-N15-014 |
| STAINLESS STEEL BALL (1-1/8") | 10S-P10-31B |
| WATERTUBE                     | 10A-N15-016 |
| PLUNGER                       | 10A-15-017  |
| PIN (3/16" X 1-11/16")        | 10A-15-018  |
| SPRING                        | 10A-15-019  |
| SPRING REST                   | 10A-N15-020 |
| BODY                          | 10A-15-021  |
| CASING CUTTER LUG             | 10A-15-022  |
| CASING CUTTER PIN             | 10A-N15-023 |
| SET SCREW                     | 10A-15-024  |

| DESCRIPTION                      | PART NO.    |
|----------------------------------|-------------|
| HW / HWT CASING / PWL ROD CUTTER | 10A-P15-012 |
| RETAINING RING                   | 10A-15-013  |
| STAINLESS STEEL BALL (1-1/8")    | 10S-P10-31B |
| PLUNGER                          | 10A-15-017  |
| PIN (3/16" X 1-11/16")           | 10A-15-018  |
| SPRING                           | 10A-15-019  |
| BODY                             | 10A-15-021  |
| CASING CUTTER LUG                | 10A-15-022  |
| SPRING PIN (7/16" X 3")          | 10A-15-023  |

BWL 3D EXPLODED VIEW





LOCKING COUPLINGS

Locking couplings help stabilize the drill string and are a quick fix to help protect the hole diameter should the reamer lose its gauge. Fordia offers conventional and hexagonal locking couplings.

For greater stabilization and less vibration on the drill string, Fordia also manufactures heavy-duty carbide locking couplings reinforced with infiltrated tungsten carbide pads. These couplings offer results similar to a reamer and have an excellent lifespan.



Carbide Locking Coupling

CONVENTIONAL W/TANG LOCKING COUPLINGS

| SIZE | PART NO.    |
|------|-------------|
| BWL  | 10S-B10-037 |
| NWL  | 10S-N10-037 |
| HWL  | 10S-H10-037 |

FULL HOLE LOCKING COUPLINGS

| SIZE | PART NO.     |
|------|--------------|
| BWL  | 10S-B10-037H |
| NWL  | 10S-N10-037H |
| HWL  | 10S-H10-037H |

CARBIDE LOCKING COUPLINGS

| SIZE | PART NO.    |
|------|-------------|
| B    |             |
| BWL  | LB-0-50-T4  |
| BT   | LB4-0-50-T4 |
| BTU  | LB5-0-50-T4 |
| BTW  | LB1-0-50-T4 |
| N    |             |
| NWL  | LN-0-50-T4  |
| NT   | LN4-0-50-T4 |
| NTU  | LN6-0-50-T4 |
| NTW  | LN1-0-50-T4 |
| H    |             |
| HWL  | LH-0-50-T4  |
| HWL  | LH-0-50-T4  |
| HT   | LH4-0-50-T4 |

DIAMOND ADAPTOR COUPLINGS

Fordia offers heavy-duty adaptor couplings that are reinforced with high-quality synthetic diamonds for improved wear resistance and superior hole stabilization. Using this stabilized system also helps increase the lifespan of core barrels.



| SIZE | PART NO.   |
|------|------------|
| BWL6 | AB-6-50-T6 |
| NWL6 | AN-6-50-T6 |
| HWL6 | AH-6-50-T6 |

WATER SWIVELS

COMPACT

Providing a watertight rotating joint, water swivels help pump efficiently pressurized water to the bottom of the hole. Fordia offers different models to match all drilling specifications – compact, compact plus and universal water swivel assemblies. High-speed water swivels for underground purposes are also available upon request - contact your sales representative to place an order.

COMPARATIVE CHART

|                   | COMPACT              | COMPACT PLUS          | UNIVERSAL              |
|-------------------|----------------------|-----------------------|------------------------|
| ROTATING CAPACITY | 500 lbs / 227 kg     | 10 000 lbs / 4 540 kg | 11 000 lbs / 5 000 kg  |
| STATIC CAPACITY   | 5 000 lbs / 2 270 kg | 20 000 lbs / 9 000 kg | 25 000 lbs / 11 400 kg |

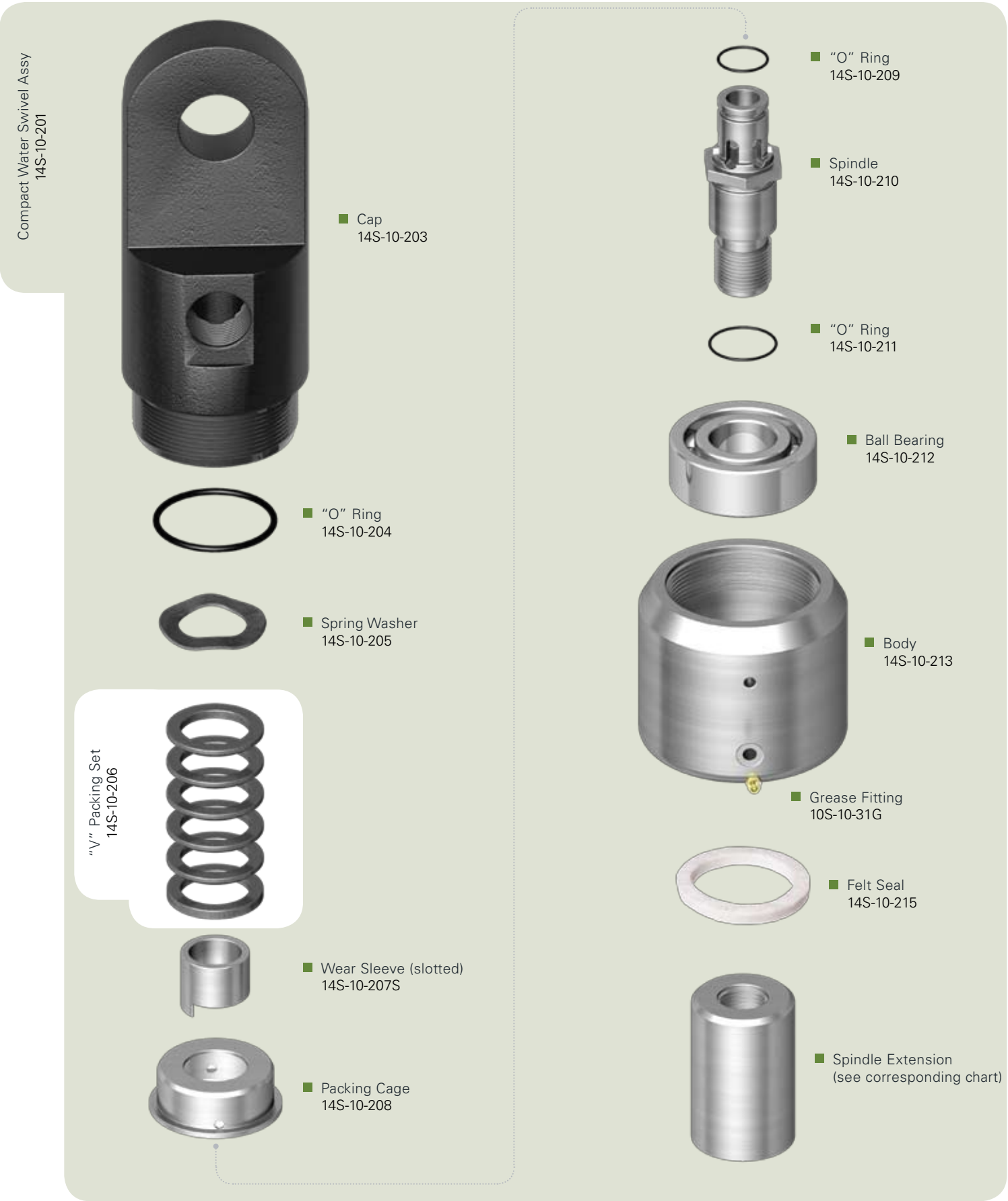
ASSEMBLY

| DESCRIPTION               | PART NO.    |
|---------------------------|-------------|
| COMPACT WATER SWIVEL ASSY | 14S-10-201  |
| REPAIR KIT COMPACT        | 14S-10-202  |
| CAP                       | 14S-10-203  |
| O-RING                    | 14S-10-204  |
| SPRING WASHER             | 14S-10-205  |
| V-PACKING SET             | 14S-10-206  |
| WEAR SLEEVE SLOTTED       | 14S-10-207S |
| PACKING CAGE              | 14S-10-208  |
| O-RING                    | 14S-10-209  |
| SPINDLE                   | 14S-10-210  |
| O-RING                    | 14S-10-211  |
| BALL BEARING              | 14S-10-212  |
| BODY                      | 14S-10-213  |
| GREASE FITTING            | 10S-10-31G  |
| FELT SEAL                 | 14S-10-215  |

SPINDLE EXTENSION

| DESCRIPTION | PART NO.   |
|-------------|------------|
| AW R/BOX    | 14S-10-216 |
| AWL R/PIN   | 14S-10-217 |
| A R/BOX     | 14S-10-218 |
| A R/PIN     | 14S-10-219 |
| BWL R/PIN   | 14S-10-220 |
| ATW R/PIN   | 14S-10-221 |
| BTW R/PIN   | 14S-10-222 |
| NWL R/PIN   | 14S-10-223 |

3D EXPLODED VIEW



WATER SWIVELS

COMPACT PLUS

Water swivels provide a watertight rotating joint to efficiently pump pressurized water to the bottom of the hole. Fordia offers different models to match all drilling specifications – compact, compact plus and universal water swivel assemblies. High-speed water swivels for underground purposes are also available upon request - contact your sales representative to place an order.

COMPARATIVE CHART

|                   | COMPACT              | COMPACT PLUS          | UNIVERSAL              |
|-------------------|----------------------|-----------------------|------------------------|
| ROTATING CAPACITY | 500 lbs / 227 kg     | 10 000 lbs / 4 540 kg | 11 000 lbs / 5 000 kg  |
| STATIC CAPACITY   | 5 000 lbs / 2 270 kg | 20 000 lbs / 9 000 kg | 25 000 lbs / 11 400 kg |

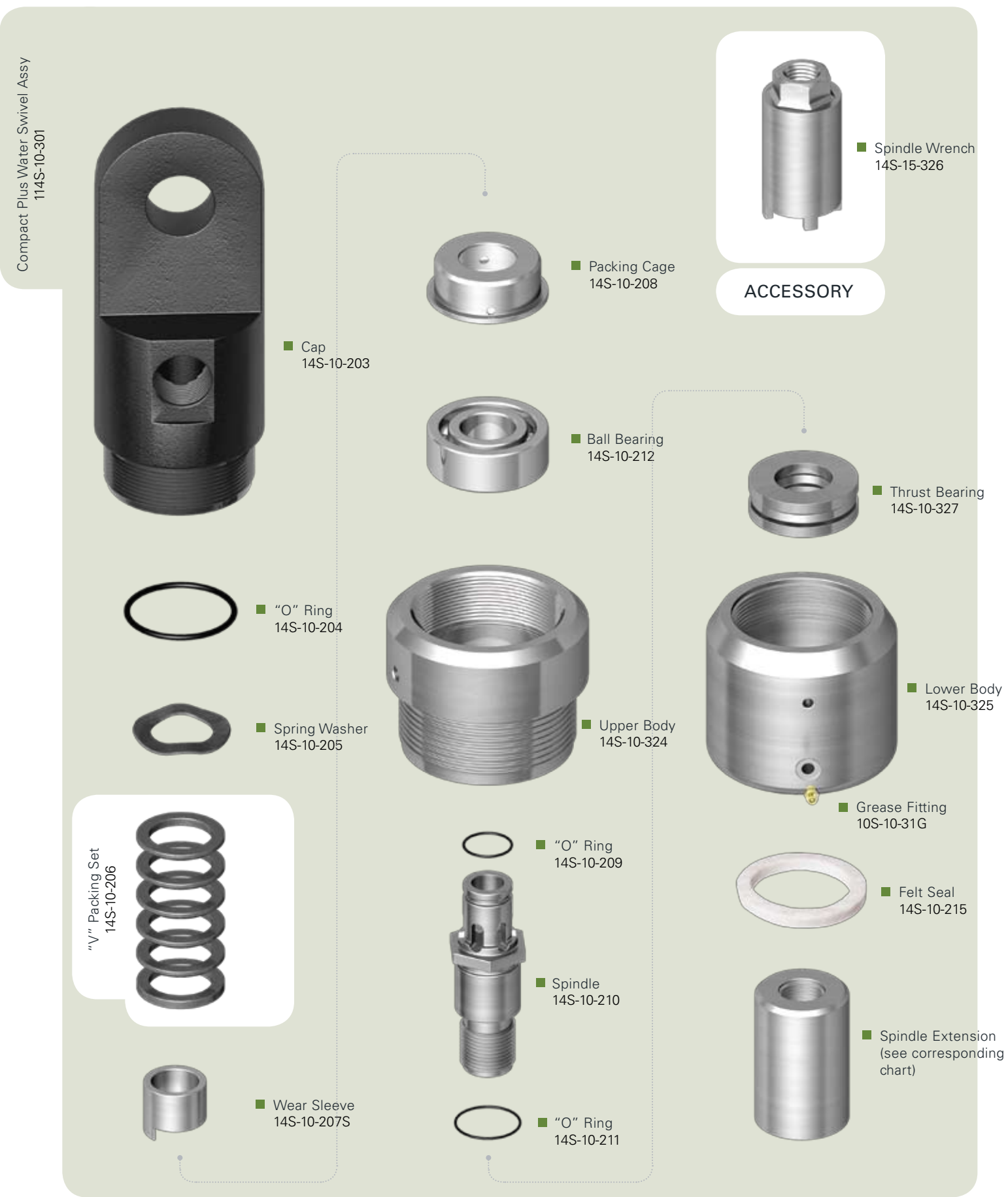
ASSEMBLY

| DECRPTION                      | PART NO.    |
|--------------------------------|-------------|
| COMPACT PLUS WATER SWIVEL ASSY | 14S-10-301  |
| REPAIR KIT COMPACT             | 14S-10-302  |
| CAP                            | 14S-10-203  |
| O-RING                         | 14S-10-204  |
| SPRING WASHER                  | 14S-10-205  |
| V-PACKING SET                  | 14S-10-206  |
| WEAR SLEEVE SLOTTED            | 14S-10-207S |
| PACKING CAGE                   | 14S-10-208  |
| O-RING                         | 14S-10-209  |
| SPINDLE                        | 14S-10-210  |
| O-RING                         | 14S-10-211  |
| BALL BEARING                   | 14S-10-212  |
| UPPER BODY                     | 14S-10-324  |
| LOWER BODY                     | 14S-10-325  |
| GREASE FITTING                 | 10S-10-31G  |
| FELT SEAL                      | 14S-10-215  |
| THRUST BEARING                 | 14S-10-327  |
| SPINDLE WRENCH (OPTIONAL)      | 14S-15-326  |

SPINDLE EXTENSION

| DESCRIPTION | PART NO.   |
|-------------|------------|
| AW R/BOX    | 14S-10-216 |
| AWL R/PIN   | 14S-10-217 |
| A R/BOX     | 14S-10-218 |
| A R/PIN     | 14S-10-219 |
| BWL R/PIN   | 14S-10-220 |
| ATW R/PIN   | 14S-10-221 |
| BTW R/PIN   | 14S-10-222 |
| NWL R/PIN   | 14S-10-223 |

3D EXPLODED VIEW





WATER SWIVELS

○ UNIVERSAL

The watertight rotating joint provided by the water swivel helps efficiently pump pressurized water to the bottom of the hole. Fordia offers different models to match all drilling specifications – compact, compact plus and universal water swivel assemblies. High-speed water swivels for underground purposes are also available upon request - contact your sales representative to place an order.

COMPARATIVE CHART

|                   | COMPACT              | COMPACT PLUS          | UNIVERSAL              |
|-------------------|----------------------|-----------------------|------------------------|
| ROTATING CAPACITY | 500 lbs / 227 kg     | 10,000 lbs / 4,540 kg | 11,000 lbs / 5,000 kg  |
| STATIC CAPACITY   | 5,000 lbs / 2,270 kg | 20,000 lbs / 9,000 kg | 25,000 lbs / 11,400 kg |

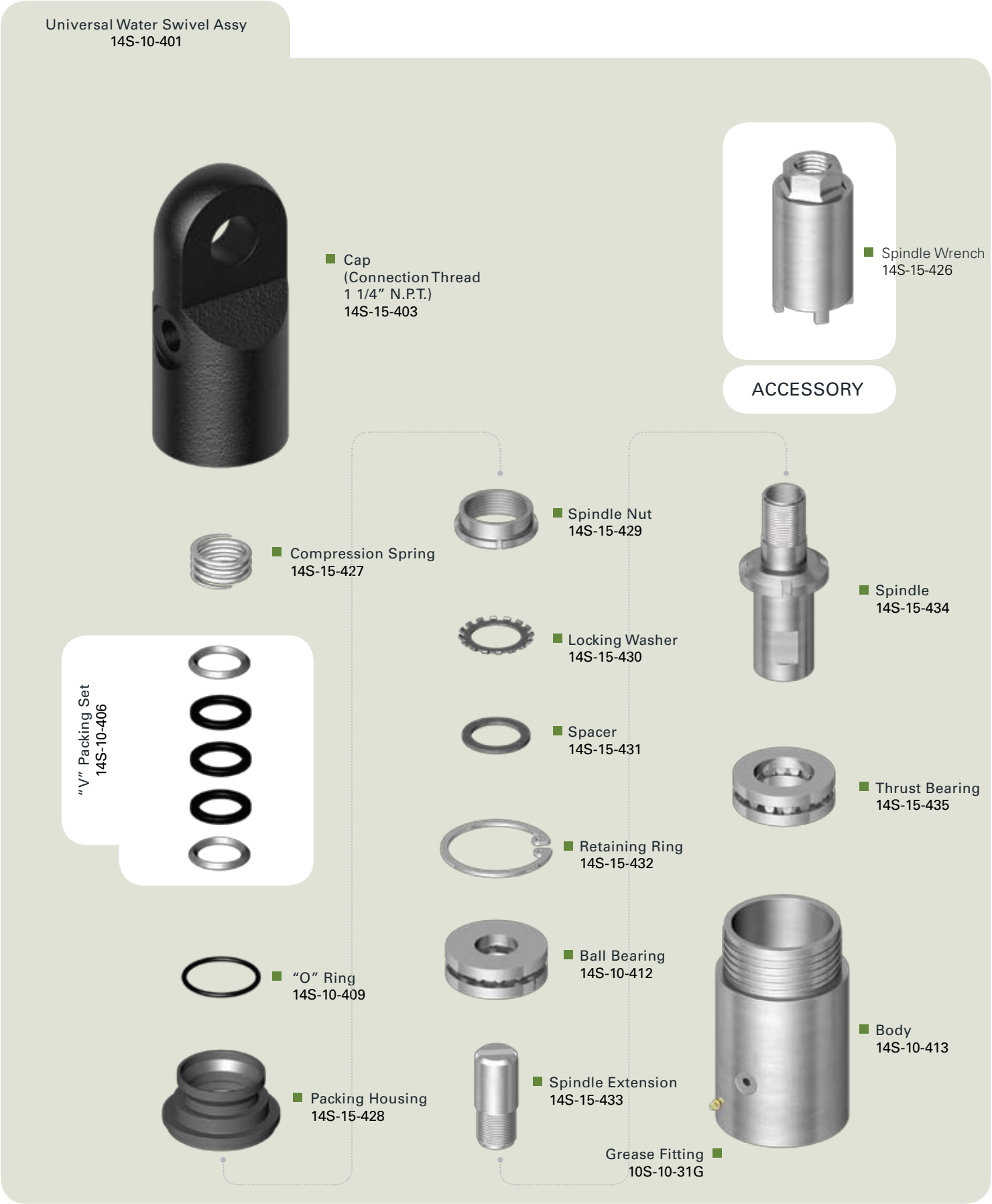
ASSEMBLY

| DESCRIPTION                          | PART NO.   |
|--------------------------------------|------------|
| UNIVERSAL W/S SWIVEL ASSY            | 14S-10-401 |
| REPAIR KIT COMPACT                   | 14S-10-402 |
| CAP (CONNECTIONTHREAD 1-1/4" N.P.T.) | 14S-15-403 |
| COMPRESSION SPRING                   | 14S-15-427 |
| V-PACKING SET                        | 14S-10-406 |
| O-RING                               | 14S-10-409 |
| PACKING HOUSING                      | 14S-15-428 |
| SPINDLE NUT                          | 14S-15-429 |
| LOCKING WASHER                       | 14S-15-430 |
| SPACER                               | 14S-15-431 |
| RETAINING RING                       | 14S-15-432 |
| BALL BEARING                         | 14S-10-412 |
| SPINDLE EXTENSION                    | 14S-15-433 |
| SPINDLE                              | 14S-15-434 |
| THRUST BEARING                       | 14S-15-435 |
| BODY                                 | 14S-10-413 |
| GREASE FITTING                       | 10S-10-31G |
| SPINDLE WRENCH                       | 14S-15-426 |

ADAPTORS

| DESCRIPTION           | PART NO.     |
|-----------------------|--------------|
| AWL R/PIN TO BW R/PIN | 15-A102-B152 |
| BWL R/PIN TO BW R/PIN | 15-B102-B152 |
| NWL R/PIN TO BW R/PIN | 15-N102-B152 |
| HWL R/PIN TO BW R/PIN | 15-H102-B152 |
| PWL R/PIN TO BW R/PIN | 15-P102-B152 |
| ATW R/PIN TO BW R/PIN | 15-A132-B152 |
| BTW R/PIN TO BW R/PIN | 15-B132-B152 |
| NTW R/PIN TO BW R/PIN | 15-N132-B152 |

3D EXPLODED VIEW



HOISTING PLUGS

Meant to hoist and lower drill rods and casings easily, Fordia’s hoisting plugs are comprised of a ball bearing type swivel made with quality components for maximum reliability. They ensure safe lifting of loads and allow the option to turn the rods or casings while they are suspended.



HOISTING PLUGS

|           | DESCRIPTION              | PART NO.   |
|-----------|--------------------------|------------|
| 6,000 lbs | HOISTING PLUG ASSY       | 67-06-001  |
|           | REPAIR KIT HOISTING PLUG | 67-06-002  |
|           | BAIL                     | 67-06-003  |
|           | SPINDLE                  | 67-06-004  |
|           | COTTER PIN               | 67-06-005  |
|           | NUT                      | 67-06-006  |
|           | BEARING ASSY             | 67-06-007  |
|           | GREASE FITTING           | 10S-10-31G |
|           | BODY AW ROD BOX          | 67-06-008  |
|           | HOISTING PLUG ASSY       | 67-13-001  |
|           | REPAIR KIT HOISTING PLUG | 67-13-002  |
|           | BAIL                     | 67-13-003  |
|           | SPINDLE                  | 67-13-004  |
|           | COTTER PIN               | 67-13-005  |
|           | NUT                      | 67-13-006  |
|           | BEARING ASSY             | 67-13-007  |
|           | GREASE FITTING           | 10S-10-31G |
|           | BODY NW ROD BOX          | 67-13-008  |
|           | HOISTING PLUG ASSY       | 67-30-001  |
|           | REPAIR KIT HOISTING PLUG | 67-30-002  |
|           | BAIL                     | 67-30-003  |
|           | SPINDLE                  | 67-30-004  |
|           | COTTER PIN               | 67-30-005  |
|           | NUT                      | 67-30-006  |
|           | BEARING ASSY             | 67-30-007  |
|           | GREASE FITTING           | 10S-10-31G |
|           | BODY NW ROD BOX          | 67-30-008  |

DRILL ROD ADAPTORS

Finding the perfect fit isn’t always simple. To make it easier, Fordia offers all sizes and configurations of drill rod adaptors, to fit any requirements – even the most specific.



| DESCRIPTION |             | PART NO.     |
|-------------|-------------|--------------|
| STD ROD PIN | STD ROD PIN |              |
| AW          | NW          | 15-A152-N152 |
| AW          | HW          | 15-A152-H152 |
|             |             |              |
| BW          | NW          | 15-B152-N152 |
| BW          | HW          | 15-B152-H152 |
|             |             |              |
| NW          | HW          | 15-N152-H152 |



| DESCRIPTION |             | PART NO.     |
|-------------|-------------|--------------|
| W/L ROD PIN | STD ROD PIN |              |
| BWL         | AW          | 15-B102-A152 |
| BWL         | BW          | 15-B102-B152 |
| BWL         | NW          | 15-B102-N152 |
|             |             |              |
| BT          | AW          | 15-B182-A152 |
|             |             |              |
| NWL         | AW          | 15-N102-A152 |
| NWL         | BW          | 15-N102-B152 |
| NWL         | NW          | 15-N102-N152 |
|             |             |              |
| NT          | AW          | 15-N182-A152 |
| NT          | BW          | 15-N182-B152 |
| NT          | NW          | 15-N182-N152 |
|             |             |              |
| HWL         | AW          | 15-H102-A152 |
| HWL         | BW          | 15-H102-B152 |
| HWL         | NW          | 15-H102-N152 |



| DESCRIPTION       |             | PART NO.     |
|-------------------|-------------|--------------|
| THIN WALL ROD PIN | STD ROD PIN |              |
| ATW               | AW          | 15-A132-A152 |
| ATW               | BW          | 15-A132-B152 |
| ATW               | NW          | 15-A132-N152 |
|                   |             |              |
| BTW               | AW          | 15-B132-A152 |
| BTW               | BW          | 15-B132-B152 |
| BTW               | NW          | 15-B132-N152 |
|                   |             |              |
| NTW               | AW          | 15-N132-A152 |
| NTW               | BW          | 15-N132-B152 |
| NTW               | NW          | 15-N132-N152 |

| DESCRIPTION       |             | PART NO.     |
|-------------------|-------------|--------------|
| THIN WALL ROD PIN | W/L ROD PIN |              |
| ATW               | AWL         | 15-A132-A102 |
| ATW               | BWL         | 15-A132-B102 |
|                   |             |              |
| BTW               | AWL         | 15-B132-A102 |
| BTW               | BWL         | 15-B132-B102 |
|                   |             |              |
| NTW               | AWL         | 15-N132-A102 |
| NTW               | BWL         | 15-N132-B102 |
| NTW               | NWL         | 15-N132-N102 |
| NTW               | HWL         | 15-N132-H102 |



| DESCRIPTION |             | PART NO.     |
|-------------|-------------|--------------|
| W/L ROD PIN | STD ROD BOX |              |
| AWL         | AW          | 15-A102-A151 |
| AWL         | BW          | 15-A102-B151 |
| AWL         | NW          | 15-A102-N151 |
|             |             |              |
| BWL         | AW          | 15-B102-A151 |
| BWL         | BW          | 15-B102-B151 |
| BWL         | NW          | 15-B102-N151 |
|             |             |              |
| NWL         | AW          | 15-N102-A151 |
| NWL         | BW          | 15-N102-B151 |
| NWL         | NW          | 15-N102-N151 |
|             |             |              |
| HWL         | AW          | 15-H102-A151 |
| HWL         | BW          | 15-H102-B151 |
| HWL         | NW          | 15-H102-N151 |





| DESCRIPTION       |             | PART NO.     |
|-------------------|-------------|--------------|
| THIN WALL ROD PIN | STD ROD BOX |              |
| ATW               | AW          | 15-A132-A151 |
| ATW               | BW          | 15-A132-B151 |
| ATW               | NW          | 15-A132-N151 |
|                   |             |              |
| BTW               | AW          | 15-B132-A151 |
| BTW               | BW          | 15-B132-B151 |
| BTW               | NW          | 15-B132-N151 |
|                   |             |              |
| NTW               | AW          | 15-N132-A151 |
| NTW               | BW          | 15-N132-B151 |
| NTW               | NW          | 15-N132-N151 |

| DESCRIPTION       |             | PART NO.     |
|-------------------|-------------|--------------|
| THIN WALL ROD PIN | W/L ROD BOX |              |
| ATW               | AWL         | 15-A132-A101 |
| ATW               | BWL         | 15-A132-B101 |
|                   |             |              |
| BTW               | AWL         | 15-B132-A101 |
| BTW               | BWL         | 15-B132-B101 |
|                   |             |              |
| NTW               | AWL         | 15-N132-A101 |
| NTW               | BWL         | 15-N132-B101 |
| NTW               | NWL         | 15-N132-N101 |



| DESCRIPTION |             | PART NO.     |
|-------------|-------------|--------------|
| STD ROD BOX | STD ROD BOX |              |
| AW          | BW          | 15-A151-B151 |
| AW          | NW          | 15-A151-N151 |
| AW          | HW          | 15-A151-H151 |
|             |             |              |
| BW          | NW          | 15-B151-N151 |
| BW          | HW          | 15-B151-H151 |
|             |             |              |
| NW          | HW          | 15-N151-H151 |



| DESCRIPTION |             | PART NO.     |
|-------------|-------------|--------------|
| W/L ROD BOX | STD ROD PIN |              |
| AWL         | AW          | 15-A101-A152 |
| AWL         | BW          | 15-A101-B152 |
| AWL         | NW          | 15-A101-N152 |
|             |             |              |
| BWL         | AW          | 15-B101-A152 |
| BWL         | BW          | 15-B101-B152 |
| BWL         | NW          | 15-B101-N152 |
|             |             |              |
| BT          | AW          | 15-B181-A152 |
|             |             |              |
| NWL         | AW          | 15-N101-A152 |
| NWL         | BW          | 15-N101-B152 |
| NWL         | NW          | 15-N101-N152 |
| NWL         | HW          | 15-N101-H152 |
|             |             |              |
| NT          | AW          | 15-N181-A152 |
| NT          | BW          | 15-N181-B152 |
|             |             |              |
| HWL         | AW          | 15-H101-A152 |
| HWL         | BW          | 15-H101-B152 |
| HWL         | NW          | 15-H101-N152 |
| HWL         | HW          | 15-H101-H152 |



| DESCRIPTION       |             | PART NO.     |
|-------------------|-------------|--------------|
| THIN WALL ROD BOX | STD ROD PIN |              |
| ATW               | AW          | 15-A131-A152 |
| ATW               | BW          | 15-A131-B152 |
| ATW               | NW          | 15-A131-N152 |
|                   |             |              |
| BTW               | AW          | 15-B131-A152 |
| BTW               | BW          | 15-B131-B152 |
| BTW               | NW          | 15-B131-N152 |
|                   |             |              |
| NTW               | AW          | 15-N131-A152 |
| NTW               | BW          | 15-N131-B152 |
| NTW               | NW          | 15-N131-N152 |





| DESCRIPTION       |             | PART NO.     |
|-------------------|-------------|--------------|
| THIN WALL ROD BOX | W/L ROD PIN |              |
| ATW               | AWL         | 15-A131-A102 |
| ATW               | BWL         | 15-A131-B102 |
| BTW               | AWL         | 15-B131-A102 |
| BTW               | BWL         | 15-B131-B102 |
| NTW               | AWL         | 15-N131-A102 |
| NTW               | BWL         | 15-N131-B102 |
| NTW               | NWL         | 15-N131-N102 |



| DESCRIPTION |             | PART NO.     |
|-------------|-------------|--------------|
| STD ROD BOX | STD ROD PIN |              |
| AW          | BW          | 15-A151-B152 |
| AW          | NW          | 15-A151-N152 |
| NW          | HW          | 15-N151-H152 |





CASING ADAPTORS

Finding the perfect fit isn’t always simple, but to make it easier, Fordia has in stock all sizes and configurations of casing adaptors to fit any requirements – even the most specific.



| DESCRIPTION |              | PART NO.     |
|-------------|--------------|--------------|
| STD ROD BOX | W CASING PIN |              |
| AW          | BW           | 15-A151-B154 |
| AW          | NW           | 15-A151-N154 |
| BW          | BW           | 15-B151-B154 |
| BW          | NW           | 15-B151-N154 |
| BW          | HW           | 15-B151-H154 |
| NW          | NW           | 15-N151-N154 |
| NW          | HW           | 15-N151-H154 |
| NW          | PW           | 15-N151-P154 |
| HW          | NW           | 15-H151-N154 |
| HW          | HW           | 15-H151-H154 |
| HW          | PW           | 15-H151-P154 |
| HW          | SW           | 15-H151-S154 |



| DESCRIPTION |              | PART NO.     |
|-------------|--------------|--------------|
| W/L ROD BOX | W CASING PIN |              |
| AWL         | AW           | 15-A101-A154 |
| BWL         | AW           | 15-B101-A154 |
| BWL         | BW           | 15-B101-B154 |
| BWL         | NW           | 15-B101-N154 |
| NWL         | BW           | 15-N101-B154 |
| NWL         | NW           | 15-N101-N154 |
| NWL         | HW           | 15-N101-H154 |
| NT          | BW           | 15-N181-B154 |
| NT          | NW           | 15-N181-N154 |
| HWL         | NW           | 15-H101-N154 |
| HWL         | HW           | 15-H101-H154 |
| HWL         | PW           | 15-H101-P154 |
| PWL         | HW           | 15-P101-H154 |
| PWL         | PW           | 15-P101-P154 |



| DESCRIPTION  |          | PART NO.     |
|--------------|----------|--------------|
| W CASING PIN | PIPE PIN |              |
| BW           | 2.5"     | 15-B154-PP25 |
| NW           | 3.0"     | 15-N154-PP30 |
| HW           | 4.0"     | 15-H154-PP40 |



| DESCRIPTION |            | PART NO.     |
|-------------|------------|--------------|
| W/L ROD PIN | CASING BOX |              |
| NWL         | BW         | 15-N102-B153 |
| HWL         | NW         | 15-H102-N153 |
| PWL         | HW         | 15-P102-H153 |



A.P.I. ADAPTORS

Fordia makes it easy to find the perfect fit, with all sizes and configurations of the A.P.I. adaptors in stock – even for the most specific requirements.



| DESCRIPTION |                 | PART NO.       |
|-------------|-----------------|----------------|
| ROD BOX     | A.P.I. REG. BOX |                |
| NW          | 2-3/8"          | 15-N151-API238 |
| NW          | 2-7/8"          | 15-N151-API278 |
| NW          | 3-1/2"          | 15-N151-API312 |



| DESCRIPTION |                 | PART NO.       |
|-------------|-----------------|----------------|
| CASING BOX  | A.P.I. REG. BOX |                |
| BW          | 2-3/8"          | 15-B153-API238 |
| NW          | 2-3/8"          | 15-N153-API238 |
| NW          | 2-7/8"          | 15-N153-API278 |
| NW          | 3-1/2"          | 15-N153-API312 |
| HW          | 2-3/8"          | 15-H153-API238 |
| HW          | 2-7/8"          | 15-H153-API278 |

CASING CAPS

To secure a drill hole between drill shifts or to seal it before leaving the drill site for good, an aluminium casing cap is generally quite handy. For easy supply, Fordia has all standard sizes of casing caps in stock.



| DESCRIPTION | PART NO.    |
|-------------|-------------|
| AW          | 13A-A15-002 |
| BW          | 13A-B15-002 |
| NW          | 13A-N15-002 |
| HW          | 13A-H15-002 |
| PW          | 13A-H15-002 |

WIRELINE CASING ADVANCERS

Using a wireline casing advancer provides an efficient one step method of drilling through overburden and casing off to bedrock. For easy supply, Fordia has standard sizes of casing advancers in stock.

| DESCRIPTION | PART NO.  |
|-------------|-----------|
| BW          | 13A-B-001 |
| NW          | 13A-N-001 |
| HW          | 13A-H-001 |

