



tomography



crosshole



downhole



surface seismic



# geotomographie

manufacturer of seismic borehole equipment



## EIViS III S8/P8 | Surface Vibrator Source

The Vibrator Source EIViS III is used to generate P- or S-wave sweep signals. The source consists of a moving mass driven by a cascaded linear motor. The source is fully cased. An adjustable pneumatic suspension ensures a maximum release of seismic energy under different surface conditions. The source is most suitable for reflection seismic surveys on paved roads and for urban areas.



The vibrator source with active vertical vibrator kit (mounted) and additional horizontal vibrator kit (right side).

### Technical Details

**Design:** Geosym GmbH

**Generated wave types:** P/S

**Power supply:** 12 or 24 V DC

**Drive system:** Cascaded linear motor

**Peak force:** Approx. 450 N

**Frequency range (P):** 20-400 Hz

**Frequency range (SH):** 20-320 Hz

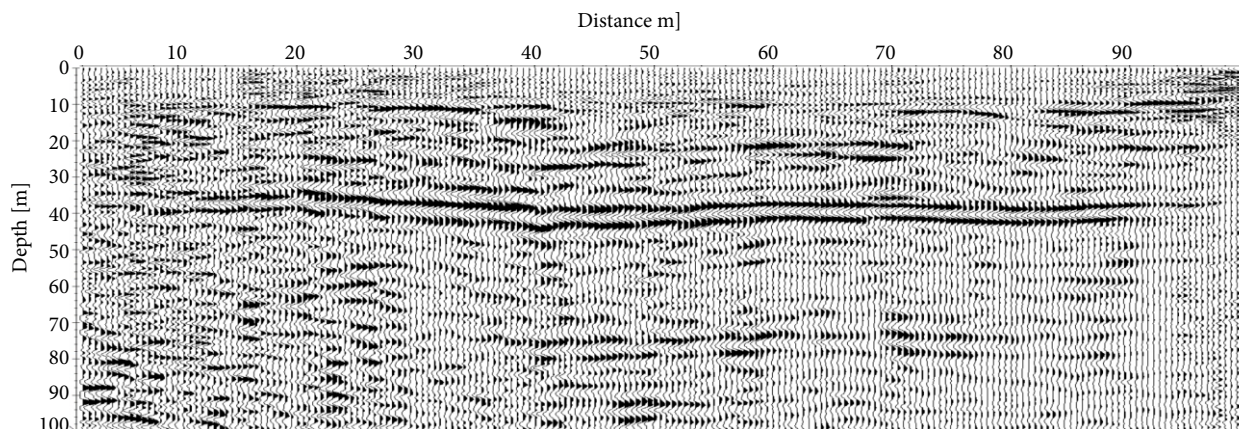
**Investigation depth (P):** Up to 100-150 m  
(depending on geology)

**Investigation depth (SH):** Up to 60-100 m  
(depending on geology)

**Source weight:** 35 kg

**Total weight:** 130 kg

### Data Example



S-wave reflection seismic section.